

# INDIAN NOTICES TO MARINERS



EDITION NO. 19 DATED 01 OCT 2024

(CONTAINS NOTICES 123 TO 129)

REACH US 24 x 7



[msis-inho@navy.gov.in](mailto:msis-inho@navy.gov.in)  
[inoh@navy.gov.in](mailto:inoh@navy.gov.in)



+91-135-2748373



National Hydrographic Office  
107-A, Rajpur Road  
Dehradun – 248001  
INDIA



Lieutenant Commander (H)  
Maritime Safety Information Services  
+91- 135 - 2746290-117

WWW

[www.hydrobharat.gov.in](http://www.hydrobharat.gov.in)

## CONTENTS

| <u>Section No.</u> | <u>Title</u>                                       |
|--------------------|--|
| I                  | List of Charts Affected                            |
| II                 | Permanent Notices                                  |
| III                | Temporary and Preliminary Notices                  |
| IV                 | Marine Information                                 |
| V                  | NAVAREA VIII Warnings in force                     |
| VI                 | Corrections to Sailing Directions                  |
| VII                | Corrections to List of Lights                      |
| VIII               | Corrections to List of Radio Signals               |
| IX                 | Corrections to Miscellaneous Nautical Publications |
| X                  | Reporting of Navigational Dangers                  |

(PUBLISHED ON NHO WEBSITE ON 1<sup>ST</sup> & 16<sup>TH</sup> OF EVERY MONTH)

**FEEDBACK:** [msis-inho@navy.gov.in](mailto:msis-inho@navy.gov.in)



INSIST ON INDIAN CHARTS AND  
PUBLICATIONS  
Original, Authentic and Up-to-Date



© Govt. of India Copyright

No permission is required to make copies of these Notices. However, such copies are not to be commercially sold.

## II

### MARINER'S OBLIGATION AND A CHART MAKER'S PLEA

Observing changes at sea proactively and reporting them promptly to the concerned charting agency, is an obligation that all mariners owe to the entire maritime community towards SOLAS. Mariners are requested to notify the Chief Hydrographer to the Government of India at the above mentioned address/fax number/ E mail address immediately on discovering new or suspected dangers to navigation, changes/ defects pertaining to navigational aids, and shortcomings in Indian charts/ publications. The Hydrographic Note [Form IH – 102] is a convenient form to notify such changes. Specimen form is attached at Section X with this notice. Also visit our website for downloading and filling up instructions for Hydrographic Note.

Chief Hydrographer  
to the Government of India

### WARNING AGAINST USE OF COUNTERFEIT PRODUCTS

**All mariners are cautioned against the use of counterfeit copies of IN Charts and publications. Navigational Charts produced after 31 Oct 14 carry NHO crest as watermark on the reverse with backslip. Chart Agent's stamp is mandatory on all Charts.**

**Counterfeit products may have errors resulting in potential risks. The same are not approved by inspecting agencies and do not satisfy the carriage requirements of SOLAS chapter V.**

**Mariners are strongly advised not to use or encourage the use of counterfeit charts and publications. Failure to comply with the warning may invite legal action.**

### III

## **EXPLANATORY NOTES**

**Corrections to Charts and Publications.** Section I comprises List of Charts affected by the notices contained in this edition. Whereas sections II and III contain information for correcting the charts and publications. Mariners should insist on corrected charts from their chart distributors/agents.

- (a) Geographical positions given are in the horizontal datum of the current edition of the chart, unless otherwise stated.
- (b) Bearings are true, reckoned clockwise from 000° to 359°. Bearings to lights are from seaward.
- (c) Symbols referred to, are those shown on the chart 5020 (INT 1).
- (d) Alterations to depth contours, deletion of depths to make way for new detail, etc; are not normally mentioned, unless they have some navigational significance.
- (e) Blocks and notes, if any, accompanying the Notices in Sections II and III are placed after Section X.

**Temporary and Preliminary Notices.** These are indicated by (T) and (P) respectively after the Notice number and are placed in Section III. Sl Nos. of those in force are published quarterly on 01 Jan, 01 Apr, 01 Jul and 01 Oct, and their text is published in Annual Edition of Indian Notices to Mariners. They should be inserted in pencil, by the user, on receipt.

**Source of Information.** A star preceding the number of a Notice indicates that the notice is promulgated by INHO based on original information received.

**Sailing Directions.** Corrections for the Sailing Directions (Pilots) are given in Section VI.

**Lights.** Corrections to Indian List of Lights are given in Section VII, where affected Light List number is quoted.

- (a) These corrections should be incorporated as per instructions given on page XI of the List of Lights.
- (b) Such correction notices to list of lights may be published in either an earlier or a later Edition of N to M than the Edition containing the Notice to the chart correction.
- (c) The range of a light given is its nominal range. Its geographical range is given in parenthesis only if it is less than the nominal range.
- (d) A star indicates that the corresponding field is to be amended and all stars indicate that new light is to be inserted.

**Radio Signals.** The corrections in Section VIII should be cut and pasted in the appropriate volume of the List of Radio Signals.

**Radio Navigational Warnings.**

- (a) These are broadcast as serially numbered NAVAREA warnings by the concerned NAVAREA coordinator through GMDSS and Area Radio Broadcasts.
- (b) They contain important information affecting navigational safety, which cannot await the publication of the next edition of N to M.
- (c) It should be borne in mind that they may be based on reports which cannot always be verified before promulgation.
- (d) It is therefore necessary to be selective, and promulgate only the more important warnings to avoid over loading users; the less important information is included in the forthcoming edition of N to M or the Chart/Publication concerned.

## IV

**Laws and Regulations.** While in the interest of the safety of shipping, the Hydrographic Office makes every endeavor to include in its publications details of the laws and regulations of all countries pertaining to navigation, it must be clearly understood: -

- (a) That no liability whatsoever can be accepted for failure to publish details of any particular law or regulation and
- (b) That publication of details of a law or regulation is solely for the safety and convenience of shipping and implies no recognition of the International validity of the law or regulation.

**Correction of Charts and Publications by the Users.** Notices to Mariners contain important information concerning safety of navigation at sea, hence, they should be used to keep the specified charts and publications up-to-date.

**Reliance on Charts and Associated Publications.** While every effort is made by the Hydrographic Office to ensure the accuracy of the information on Charts and Publications before they are published, it should be appreciated that it may not always be complete and up-to-date. The mariner must be the final judge for the reliance he can place on the information available, bearing in mind his particular circumstances, local pilotage guidance and judicious use of available navigational aids.

**Use of Global Positioning System (WGS 84) positions.**

- (a) The positions of hydrographic objects shown on some of the Indian charts and publications are in Everest datum. However, the positions of vessels obtained from Global Positioning System (GPS) are on World Geodetic System 1984 datum. There will always exist difference in the position values obtained by visual fixing (Everest Datum) and GPS position (WGS 84 datum).
- (b) Wherever these differences have been ascertained, their average values are published as a Cautionary Note on the chart concerned, as shifts in Latitude and Longitude. Whilst plotting GPS positions on charts, the shift values as given on the chart must be applied, before making any assessment of the navigational situation vis-à-vis the other charted information.
- (c) These datum shift values are not uniform, particularly in areas off Andaman and Nicobar and Lakshadweep Islands, as these places are not linked to mainland network (Everest datum). Mariners are advised to use alternate source of position information such as Visual or Radar, particularly when closing the shore or navigating in the vicinity of dangers.

**Source Data on Charts.** All Indian charts contain specific information on their source of hydrographic data. In areas where the source data is very old, incomplete and less reliable, the mariner must use such charts with prudence. Mariner should always use the largest scale charts available for the area. Apart from being the most detailed, the larger scale charts are usually corrected first. Hydrographic information may be sparse on small scale charts. On such charts, a charted shoal may be in error as regards position, least depth and extent. Uncharted dangers may also exist, particularly in areas away from well-established routes. Mariners must exercise due caution.

**Further Guidance.** The Mariner's Hand Book (NP 100) gives full explanation on the use of charts and the type of information contained on charts. In their own interest, all users of charts should refer to it.

## NEWLY PUBLISHED INDIAN CHARTS, ENC<sub>s</sub> AND PUBLICATION

1. The new Indian Charts that is available for mariners in the market is as follows:-

| <i>Chart No.</i> | <i>Date of Publication</i> | <i>Title, Limits &amp; Description</i>   | <i>Scale</i> | <i>Folio</i> | <i>Price</i> |
|------------------|----------------------------|--|--------------|--------------|--------------|
| 2111             | 30 SEP 2024                | <b>VIZHINJAM PORTS</b><br>08° 20'.80N; 76° 56'.50E.<br>08° 24'.30N; 77° 01'.85E. | 10000        | 4            | Rs. 2000.00  |

2. The new edition Indian Charts that are available for mariners in the market are as follows:-

| <i>Chart No.</i> | <i>Date of Publication</i> | <i>Title, Limits &amp; Description</i> | <i>Scale</i> | <i>Folio</i> | <i>Price</i> |
|------------------|----------------------------|--|--------------|--------------|--------------|
| <i>Nil</i>       |                            |  |              |              |              |

3. The Indian Charts that is permanently withdrawn is as follows:-

| <i>Chart No.</i> | <i>Date of Publication</i> | <i>Title</i>      | <i>On Publication of New Chart/ Edition</i> | <i>Date of Publication</i> |
|------------------|----------------------------|-------------------|---|----------------------------|
| 2111             | 30 NOV 2013                | VIZHINJAM HARBOUR | 2111  | 30 SEP 2024                |

4. The new Indian Electronic Navigational Charts that is available for mariners in the market is as follows:-

| <i>ENC Cell Name</i> | <i>Chart No.</i> | <i>Title</i>    | <i>Issue Date</i> |
|----------------------|------------------|-----------------|-------------------|
| IN62111A             | 2111             | VIZHINJAM PORTS | 27 SEP 2024       |

5. The new edition Indian Electronic Navigational Charts that are available for mariners in the market are as follows:-

| <i>ENC Cell Name</i> | <i>Chart No.</i> | <i>Title</i>                | <i>Issue Date</i> |
|----------------------|------------------|-----------------------------|-------------------|
| IN63004C             | 3004             | CHENNAI HARBOUR             | 25 SEP 2024       |
| IN43034B             | 3034             | APPROACHES TO KRISHNAPATNAM | 27 SEP 2024       |
| IN63034A             | 3034             | KRISHNAPATNAM PORT          | 27 SEP 2024       |
| IN54181S             | 4181             | SOUTH BAY AND APPROACHES    | 26 SEP 2024       |

6. The Indian Electronic Navigational Charts that are permanently withdrawn are as follows:-

| <i>ENC Cell Name</i> | <i>Chart No.</i> | <i>Title</i>                     | <i>Issue Date</i> |
|----------------------|------------------|----------------------------------|-------------------|
| IN62111H             | 2111             | VIZHINJAM HARBOUR                | 11 FEB 2014       |
| IN63004C             | 3004             | CHENNAI HARBOUR                  | 27 JUL 2021       |
| IN43034B             | 3034             | APPROACHES TO KRISHNAPATNAM PORT | 23 JAN 2023       |
| IN63034A             | 3034             | KRISHNAPATNAM PORT               | 23 JAN 2023       |
| IN54181S             | 4181             | SOUTH BAY AND APPROACHES         | 31 DEC 2014       |

## VI

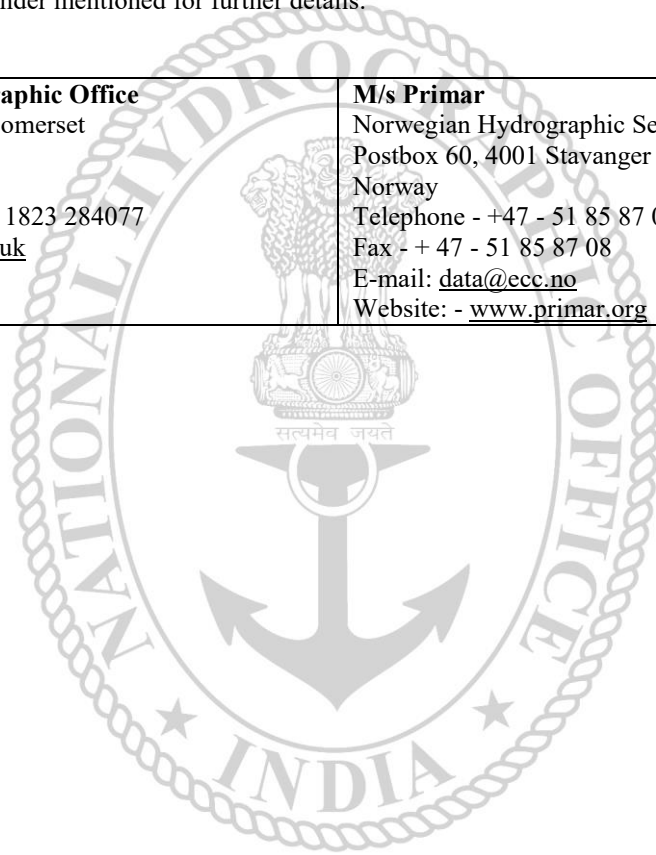
7. The forthcoming Indian Charts are as follows:-

| <i>Chart No</i>       | <i>Title</i>                             | <i>Scale</i>   | <i>Remarks</i>     |
|-----------------------|--|----------------|--------------------|
| <b>2049</b>           | <b>DEVGARH HARBOUR</b>                   | <b>25000</b>   | <b>NEW CHART</b>   |
| <b>2054</b>           | <b>MADHWAD BAY</b>                       | <b>25000</b>   | <b>NEW EDITION</b> |
| <b>31 (INT 756)</b>   | <b>BAY OF BENGAL – NORTHERN PORTION</b>  | <b>1500000</b> | <b>NEW EDITION</b> |
| <b>33 (INT 755)</b>   | <b>BAY OF BENGAL – SOUTHERN PORTION</b>  | <b>1500000</b> | <b>NEW EDITION</b> |
| <b>404 (INT 7439)</b> | <b>ELPHINSTONE HARBOUR TO PORT BLAIR</b> | <b>150000</b>  | <b>NEW EDITION</b> |

### Availability of ENCs

The complete folios of Official Indian ENCs are distributed worldwide through M/s IIC Technologies Limited, UKHO and Norwegian Hydrographic Service. UKHO distributes Indian ENCs through the worldwide network of their agents and distributors. Updates are also made available as per the existing policy of the distributor. Mariners and other ENC users may contact the under mentioned for further details:

|  |  |
|--|--|
| <p><b>United Kingdom Hydrographic Office</b><br/>Admiralty Way, Taunton, Somerset<br/>TA1 2DN, UK<br/>Tel : +44 (0) 1823 337900<br/>Fax : +44 (0) 1823 330561, 1823 284077<br/>Web site : <a href="http://www.hydro.gov.uk">www.hydro.gov.uk</a></p> | <p><b>M/s Primar</b><br/>Norwegian Hydrographic Service,<br/>Postbox 60, 4001 Stavanger<br/>Norway<br/>Telephone - +47 - 51 85 87 00<br/>Fax - + 47 - 51 85 87 08<br/>E-mail: <a href="mailto:data@ecc.no">data@ecc.no</a><br/>Website: - <a href="http://www.primar.org">www.primar.org</a></p> |
|--|--|



## VII

### TEMPORARY AND PRELIMINARY NOTICES

*In Force as on 01 Oct 2024*

*(Former List dated 01 Jul 2024 is cancelled)*

| <b>Cancelled Notices</b> |  |
|--------------------------|--|
| <b>Area</b>              | <b>Notice No.</b>                              |
| 1                        | NIL  |
| 2                        | 215/22, 179/23, 066/24, 079/24, 082/24, 083/24 |
| 3                        | 067/24, 085/24, 094/24, 095/24                 |
| 4                        | NIL  |

| <b>1. AFRICA EAST COAST, MADAGASCAR, RED SEA, ARABIA, PERSIAN GULF, PAKISTAN.</b> |  |   |
|---|--|---|
| <b>Notice</b>   | <b>Charts Affected</b>   | <b>Description</b>  |
| 091/19  | 227 – 2061 – 2099.   | INDIAN OCEAN – MALDIVES – Male Atoll – Construction Work.                                 |
| 149/22  | 22 (INT 752) – 273 – 7071 (INT 71) – 7072 (INT 72) – 7073 (INT 73) – 7703 (INT 703) – 7706 (INT 706) – 7707 (INT 707). | ARABIAN AND LAKSHADWEEP SEAS – INDIA AND MALDIVES – Kadmat Island to Ihavandiffulu Atoll. |

| <b>2. INDIA WEST COAST, LAKSHADWEEP, INDIAN OCEAN.</b> |   |   |
|--|---|---|
| <b>Notice</b>  | <b>Charts Affected</b>  | <b>Description</b>  |
| 127/15   | 2040.   | INDIA – WEST COAST – Porbandar Port – Jetty.  |
| 164/18   | 21 – 292 (INT 7021) – 253 (INT 7328) – 206.   | INDIA – WEST COAST – Veraval to Diu Head – Construction work.                           |
| 076/19   | 292 (INT 7021) – 293 (INT 7022) – 255 (INT 7334) – 211 – 2016 (INT 7336) – 2076 (INT 7338) – 2123.              | INDIA – WEST COAST – Ulwa Channel – Construction Work.                                  |
| 120/19   | 21 – 251 (INT 7318) – 252 (INT 7325) – 203 (INT 7319) – 2068 – 2031 (INT 7326) – 2013 (INT 7324).               | INDIA – WEST COAST – Gulf of Kachchh – Port of Okha – Construction Work.                |
| 180/19   | 292 (INT 7021) – 253 (INT 7328) – 254 (INT 7331) – 207 – 2081 (INT 7342) – 2100.                                | INDIA – WEST COAST – Gulf of Khambhat – Approaches to Port Pipavav – Construction Work. |
| 091/20   | 21 – 22 (INT 752) – 292 (INT 7021) – 293 (INT 7022) – 255 (INT 7334) – 211 – 2016 (INT 7336) – 2076 (INT 7338). | INDIA – WEST COAST – Jawaharlal Nehru Port and Trombay – Construction work.             |
| 094/20   | 21 – 22 (INT 752) – 292 (INT 7021) – 293 (INT 7022) – 255 (INT 7334) – 211 – 2016 (INT 7336) – 2076 (INT 7338). | INDIA – WEST COAST – Jawaharlal Nehru Port and Trombay – Construction work.             |
| 095/21   | 2106 – 2079 (INT 7329) – 2068 – 203 (INT 7319) – 21.  | INDIA – WEST COAST – GULF OF KACHCHH – Mundra Port- Construction Work.                  |
| 118/21   | 2076 (INT 7338) – 2016 (INT 7336) – 211 – 255 (INT 7334) – 292 (INT 7021) – 293 (INT 7022) – 21-22 (INT 752).   | INDIA – WEST COAST – Jawaharlal Nehru Port and Trombay – Construction activity.         |

| <b>2. INDIA WEST COAST, LAKSHADWEEP, INDIAN OCEAN. (Continued).</b> |   |  |
|---|---|--|
| 129/21  | 21 – 22 (INT 752) – 292(INT 7021) – 293(INT 7022) – 255(INT 7334) – 211 – 2016(INT 7336) – 2076(INT 7338).  | INDIA –WEST COAST – Jawaharlal Nehru Port and Trombay- Construction work.                |
| 098/22  | 21 – 292 (INT 7021) – 253 (INT 7328) – 254 (INT 7331) – 207 – 209 – 2081 (INT 7342) – 2100 (INT 7344) – 2101 (INT 7347).  | INDIA –WEST COAST – Approaches to Hazira – Construction Work.                            |
| 216/22  | 21 – 203 (INT 7319) – 2068 – 2080 – 2079 (INT 7329) – 2106.   | INDIA – WEST COAST – Gulf of Kachchh – Mundra Port – Dredging.                           |
| 218/22  | 255 (INT 7334) – 256 (INT 7340) – 211 – 212 – 2036 (INT 7352) – 2103.   | INDIA – WEST COAST – Dighi Port – Dredging.  |
| 220/22  | 21 – 292 (INT 7021) – 254 (INT 7331) – 208 – 2039 – 2082 – 2110.  | INDIA – WEST COAST – Gulf to Khambhat – Dahej Harbour – Jetty Construction.              |
| 047/23  | 2005 – 2114.  | INDIA – WEST COAST – Approaches to Kharo Creek and Mitha Port – Buoys                    |
| 080/23  | 31(INT 756).  | INDIAN OCEAN – Bay of Bengal – Northern Portion (Krishnapatnam to Bassein River) –Wreck. |
| 116/23  | 22 (INT 752) – 32 (INT 754) – 220 – 259 (INT 7356) – 260 (INT 7362) – 2029 (INT 7358) – 7071 (INT 71) – 7073 (INT 73) – 7703 (INT 703) – 7706 (INT 706)   | INDIA – WEST COAST – Approaches to Kochi – Data Buoys.                                   |
| 131/23  | 2008 – 2009 – 2010 – 2353.  | INDIA – WEST COAST – Karwar naval Harbour – Buoy.  |
| 134/23  | 211 – 212 – 254 (INT 7340) – 255 (INT 7334) – 2036 (INT 7352).  | INDIA – WEST COAST – Dighi Harbour (Murud – Janjira) and Approaches – Fairway Buoy.      |
| 135/23  | 2008 – 2120 – 2353.   | INDIA – WEST COAST – Karwar Port – Buoy.   |
| 142/23  | 2111 – 2012 – 222 – 223 – 260 (INT 7362) – 261.   | INDIA – WEST COAST – Vizhinjam Harbour – Construction Activity.                          |
| 143/23  | 2111 – 2012 – 222 – 223 – 260 (INT 7362) – 261  | INDIA – WEST COAST – Vizhinjam Harbour – Construction Activity.                          |
| 163/23  | 22 (INT 752) – 212 – 256 (INT 7340) – 293 (INT 7022) – 2011 – 2105  | INDIA – WEST COAST – Jaigarh and Angre Ports – Construction Activity.                    |
| 185/23  | 32 (INT 754) – 224 – 262 (INT 7365) – 2075 (INT 7366).  | INDIA – WEST COAST – Tuticorin Harbour; Approaches to Tuticorin – Construction Activity. |
| 037/24  | 260 (INT 7362) – 261 (INT 7363) – 222 – 223 – 2012  | INDIA – WEST COAST – Vizhinjam Anchorage, Alleppey Anchorage – Buoys.                    |
| 044/24  | 21 – 22 (INT 752) – 32 (INT 754) – 214 – 221 – 251 (INT 7318) – 253 (INT 7328) – 258 (INT 7348) – 260 (INT 7362) – 261 (INT 7363) – 263 (INT 7383) – 271 – 272 – 291 – 292 (INT 7021) – 293 (INT 7022) – 294 (INT 7023) – 295 (INT 7024). | INDIA – WEST COAST – Arabian Sea – ADCP Moorings.  |
| 090/24  | 22 (INT 752) – 32 (INT 754) – 260 (INT 7362) – 261 – 222 – 223 – 2012 – 2111.   | INDIA – WEST COAST – Vizhinjim Harbour– Jetty Construction.                              |
| 091/24  | 22 (INT 752) – 32 (INT 754) – 260 (INT 7362) – 261 – 222 – 223 – 2012 – 2111.   | INDIA – WEST COAST – Vizhinjam Harbour – Construction Activity.                          |
| 092/24  | 2044 – 2101 (INT 7347) – 2108.  | INDIA – WEST COAST – ESSAR Bulk Terminal– Buoys.   |
| 106/24  | 222 – 223 – 2012.   | INDIA – WEST COAST – Alleppey Anchorage; Vizhinjam Anchorage – Buoys.                    |
| 107/24  | 21 - 203 (INT 7319) - 2068 - 2080 – 2079 (INT 7329) - 2106.   | INDIA – WEST COAST – Gulf of Kachchh – Mundra Port – Construction of Berth.              |



| <b>2. INDIA WEST COAST, LAKSHADWEEP, INDIAN OCEAN. (Continued).</b> |  |  |
|---|--|--|
| 113/24  | 21 – 22 (INT 752) – 204 – 207 – 210 – 211 – 252 (INT 7325) – 253 (INT 7328) – 254 (INT 7331) – 255 (INT 7334) – 256 (INT 7340) – 271 – 291 – 292 (INT 7021) – 293 (INT 7022) – 7071 (INT 71) – 7072 (INT 72) – 7073 (INT 73) – 7705 (INT 705) – 7706 (INT 706).  | INDIA – WEST COAST – Arabian Sea – Oil Rigs.                     |
| 120/24  | 21 – 22 (INT 752) – 268 (INT 7353) – 273 – 292 (INT 7021) – 293 (INT 7022) – 294 (INT 7023) – 295 (INT 7024) – 2047 – 7070 (INT 70) – 7071 (INT 71) – 7072 (INT 72) – 7073 (INT 73) – 7702 (INT 702) – 7703 (INT 703) – 7705 (INT 705) – 7706 (INT 706) – 7707 (INT 707).  | INDIA – WEST COAST – Arabian Sea – Data Buoys and Tsunami Buoys. |
| 122/24  | 21 – 31 (INT 756) – 32 (INT 754) – 33 (INT 755) – 41 (INT 757) – 291 – 315 – 316 – 358 (INT 7394) – 7070 (INT 70) – 7071 (INT 71) – 7072 (INT 72) – 7073 (INT 73) – 7508 (INT 508) – 7701 (INT 701) – 7702 (INT 702) – 7703 (INT 703) – 7706 (INT 706) – 7707 (INT 707) – 7708 (INT 708).  | INDIAN OCEAN – NORTHERN PART – RAMA Buoys.                       |
| 129/24  | 21 – 22 (INT 752) – 31 (INT 756) – 32 (INT 754) – 33 (INT 755) – 205 – 206 – 211 – 212 – 213 – 219 – 222 – 223 – 224 – 252 (INT 7325) – 253 (INT 7328) – 255 (INT 7334) – 256 (INT 7340) – 258 (INT 7348) – 259 (INT 7356) – 260 (INT 7362) – 261 (INT 7363) – 262 (INT 7365) – 272 – 292 (INT 7021) – 293 (INT 7022) – 294 (INT 7023) – 305 – 308 (INT 7409) – 352 (INT 7416) – 353 (INT 7413) – 354 (INT 7408) – 356 (INT 7400) – 391 – 2012 – 2028 – 2037 – 2121 – 3002 (INT 7410) – 3034 – 3035 – 3043 – 7070 (INT 70) – 7071 (INT 71) – 7072 (INT 72) – 7073 (INT 73) – 7702 (INT 702) – 7703 (INT 703) – 7705 (INT 705) – 7706 (INT 706) – 7707 (INT 707). | INDIAN OCEAN – Northern Part – Wave Rider Buoys.                 |

| <b>3. INDIA EAST COAST, ANDAMAN NICOBAR, SRI LANKA, BANGLADESH, MYANMAR.</b> |   |  |
|--|---|--|
| <b>Notice</b>  | <b>Charts Affected</b>  | <b>Description</b>   |
| 090/18   | 31 (INT 756) – 32 (INT 754) – 391 – 354 (INT 7408) – 308 – 3002 (INT 7410) – 3012 (INT 7411). | INDIA – EAST COAST – Vishakhapatnam Harbour – Construction Work.                                       |
| 188/19   | 4013.   | ANDAMAN SEA – INDIA – ANDAMAN ISLANDS – Shaheed Dweep Pier (Neill Island Pier) – Construction Work.    |
| 211/19   | 4043.   | ANDAMAN SEA – INDIA – ANDAMAN ISLANDS – Ariel Bay – Construction Work.                                 |
| 237/19   | 41 (INT 757).   | BAY OF BENGAL AND ANDAMAN SEA – Andaman Sea – Dredging.  |
| 244/19   | 31 (INT 756).   | INDIAN OCEAN – Bay of Bengal – Northern Portion (Krishnapatnam to Bassein River) – Drilling Operation. |
| 090/21   | 31 (INT 756).   | INDIAN OCEAN – Bay of Bengal – Northern Portion (Krishnapatnam to Bassein River) – wreck.              |
| 103/21   | 224 – 223 – 262 (INT 7365) – 32 (INT 754).  | INDIA – SOUTH EAST COAST – GULF OF MANNAR – Manappad to Setukkarai – Construction Activities.          |
| 119/21   | 31 (INT 756).   | INDIAN OCEAN – Bay of Bengal – Northern Portion (Krishnapatnam to Bassein River) – wreck.              |
| 177/21   | 31 (INT 756).   | INDIAN OCEAN – Bay of Bengal – Northern Portion (Krishnapatnam to Bassein River) – wreck.              |
| 202/21   | 31 (INT 756) – 351 (INT 7419)   | INDIA – EAST COAST – Paradip to Pussur River – Wreck.  |
| 064/22   | 31 (INT 756)  | INDIAN OCEAN – Bay of Bengal – Northern Portion (Krishnapatnam to Bassein River) – Wreck.              |

| <b>3. INDIA EAST COAST, ANDAMAN NICOBAR, SRI LANKA, BANGLADESH, MYANMAR.<br/>(Continued).</b> |   |  |
|---|---|--|
| 073/22  | 31(INT 756)   | INDIAN OCEAN – Bay of Bengal – Northern Portion (Krishnapatnam to Bassein River) –Wreck.     |
| 096/22  | 31(INT 756)   | INDIAN OCEAN – Bay of Bengal – Northern Portion (Krishnapatnam to Bassein River) –Wreck.     |
| 097/22  | 31(INT 756)   | INDIAN OCEAN – Bay of Bengal – Northern Portion (Krishnapatnam to Bassein River) –Wreck.     |
| 115/22  | 32 (INT 754) – 262 (INT 7365) – 223 – 224   | INDIA – SOUTH COAST – Kolachel to Manappad – Jetty Construction.                             |
| 128/22  | 31(INT 756)   | INDIAN OCEAN – Bay of Bengal – Northern Portion (Krishnapatnam to Bassein River) –Wreck.     |
| 139/22  | 351 (INT 7419)  | INDIA – EAST COAST – Paradip to Pussur River –Buoy.  |
| 140/22  | 31(INT 756)   | INDIAN OCEAN – Bay of Bengal – Northern Portion (Krishnapatnam to Bassein River) –Wreck.     |
| 141/22  | 31(INT 756)   | INDIAN OCEAN – Bay of Bengal – Northern Portion (Krishnapatnam to Bassein River) –Wreck.     |
| 180/22  | 31(INT 756)   | INDIAN OCEAN – Bay of Bengal – Northern Portion (Krishnapatnam to Bassein River) – Dredging. |
| 195/22  | 31 (INT 756)  | INDIAN OCEAN – BAY OF BENGAL – Northern Portion (Krishnapatnam to Bassein River) – Drilling. |
| 204/22  | 31 (INT 756)  | INDIAN OCEAN – Bay of Bengal – Northern Portion (Krishnapatnam to Bassein River) –Wreck.     |
| 223/22  | 31 (INT 756)  | INDIAN OCEAN – Bay of Bengal – Northern Portion (Krishnapatnam to Bassein River) –Wreck.     |
| 033/23  | 31 (INT 756)  | INDIA OCEAN – BAY OF BENGAL – Northern Portion – Krishnapatnam to Bassein River – Anchorage. |
| 040/23  | 32 (INT 754) – 33 (INT 755) – 391 – 356 (INT 7400) – 313 – 3001 (INT 7402) – 3028 (INT 7404). | INDIA – EAST COAST – Kamarajar Port – Jetty Construction.                                    |
| 042/23  | 31(INT 756)   | INDIAN OCEAN – Bay of Bengal – Northern Portion (Krishnapatnam to Bassein River) –Wreck.     |
| 059/23  | 3010 (INT 7418) – 3041  | INDIA – EAST COAST – Paradip Anchorage – Buoys.  |
| 075/23  | 31 (INT 756) – 32 (INT 754) – 355 (INT 7405) – 391 – 3005                                     | INDIA – EAST COAST – Machilipatnam Anchorage – Construction Activity.                        |
| 076/23  | 31 (INT 756) – 32 (INT 754) – 354 (INT 7408) – 391 – 3042.                                    | INDIA – EAST COAST – Approaches to Kakinada – Construction Activity.                         |
| 077/23  | 31 (INT 756) – 32 (INT 754) – 355 (INT 7405) – 391 – 3008 – 3026.                             | INDIA – EAST COAST – Nizampatnam Anchorage – Construction Activity.                          |
| 078/23  | 31 (INT 756) – 32 (INT 754) – 356 (INT 7400) – 391.   | INDIA – EAST COAST – Chennai to Ramayapatnam – Construction Activity.                        |
| 079/23  | 31 (INT 756) – 32 (INT 754) – 355 (INT 7405) – 356 (INT 7400) – 391.                          | INDIA – EAST COAST – Chennai to Ramayapatnam – Construction Activity.                        |
| 110/23  | 31 (INT 756)  | INDIAN – OCEAN – Bay of Bengal – Northern Portion (Krishnapatnam to Bassein River) – Wreck   |
| 146/23  | 31 (INT 756)  | INDIAN OCEAN – Bay of Bengal – Northern Portion (Krishnapatnam to Bassein River) – Wreck.    |

| <b>3. INDIA EAST COAST, ANDAMAN NICOBAR, SRI LANKA, BANGLADESH, MYANMAR.<br/>(Continued).</b> |   |   |
|---|---|---|
| 151/23  | 351 (INT 7419).   | INDIA – EAST COAST – Paradip to Pussur River – Buoy.                                      |
| 187/23  | 31 (INT 756)  | INDIAN OCEAN – Bay of Bengal – Northern Portion (Krishnapatnam to Bassein River) – Wreck. |
| 074/24  | 31 (INT 756) – 32 (INT 754) – 33 (INT 755) – 304 – 305 – 308 (INT 7409) – 352 (INT 7416) – 353 (INT 7413) – 354 (INT 7408) – 355 (INT 7405) – 356 (INT 7400) – 357 (INT 7397) – 391 – 7071 (INT 71) – 7073 (INT 73) – 7706 (INT 706).   | INDIA – EAST COAST – Bay of Bengal – ADCP Moorings.                                       |
| 093/24  | 32 (INT 754) – 33 (INT 755) – 391 – 356 (INT 7400) – 313 – 3001 (INT 7402) – 3028 (INT 7404).   | INDIA – EAST COAST – Kamarajar Port – Buoys.  |
| 114/24  | 32 (INT 754) – 33 (INT 755) – 357 (INT 7397) – 7071 (INT 71) – 7073 (INT 73) – 7706 (INT 706).  | INDIA – EAST COAST – Bay of Bengal – Oil Rigs.  |
| 121/24  | 31 (INT 756) – 32 (INT 754) – 33 (INT 755) – 41 (INT 757) – 313 – 356 (INT 7400) – 357 (INT 7397) – 391 – 404 (INT 7439) – 405 (INT 7440) – 472 (INT 7032) – 473 (INT 7031) – 3001 (INT 7402) – 3004 (INT 7403) – 4115 – 7071 (INT 71) – 7073 (INT 73) – 7706 (INT 706) – 7707 (INT 707). | INDIA – EAST COAST – Bay of Bengal – Andaman Sea – Data Buoys and Tsunami Buoys.          |

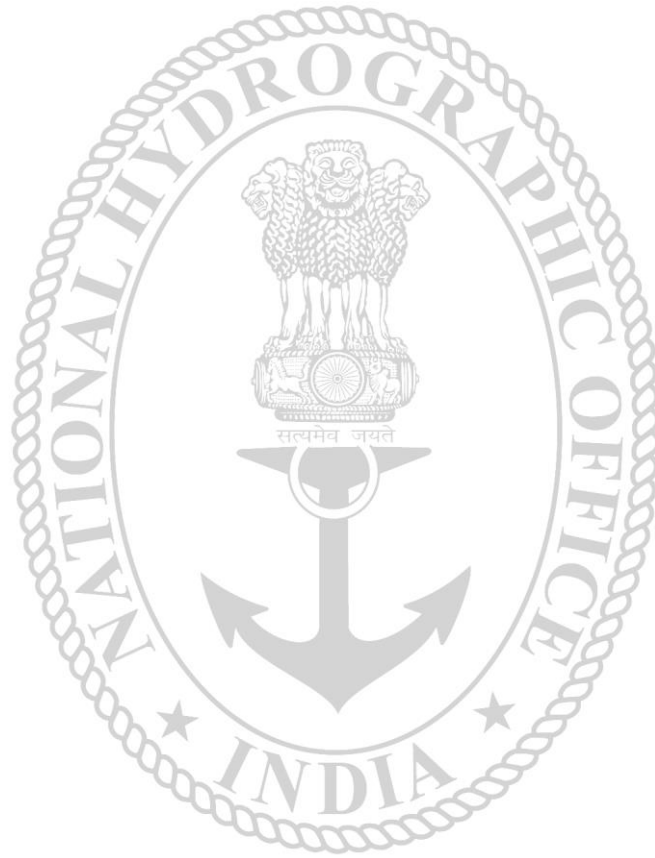
| <b>4. MALACCA STRAIT, SINGAPORE STRAIT AND SUMATERA.</b> |   |  |
|--|---|--|
| <b><u>Notice</u></b>                                     | <b><u>Charts Affected</u></b>                     | <b><u>Description</u></b>                            |
| 039/24   | 7703 (INT 703) – 7706 (INT 706) – 7707 (INT 707). | INDIAN OCEAN – Maldives to Sumatera – ADCP Moorings. |

**SECTION – I**

The list of charts affected by the Notices 123 to 129 contained in this edition is as follows:-

| <b>CHART NUMBER</b> | <b>FOLIO NO.</b> | <b>NOTICE NO.</b> |
|---------------------|------------------|-------------------|
| 21                  | 2                | 129 (T)           |
| 22 (INT 752)        | 3                | 129 (T)           |
| 31 (INT 756)        | 5                | 129 (T)           |
| 32 (INT 754)        | 5                | 129 (T)           |
| 33 (INT 755)        | 5                | 129 (T)           |
| 205                 | 2                | 129 (T)           |
| 206                 | 2                | 129 (T)           |
| 211                 | 3                | 129 (T)           |
| 212                 | 3                | 129 (T)           |
| 213                 | 3                | 129 (T)           |
| 217                 | 4                | 127               |
| 219                 | 4                | 129 (T)           |
| 222                 | 4                | 129 (T)           |
| 223                 | 4                | 129 (T)           |
| 224                 | 5                | 129 (T)           |
| 252 (INT 7325)      | 2                | 129 (T)           |
| 253 (INT 7328)      | 2                | 129 (T)           |
| 255 (INT 7334)      | 3                | 129 (T)           |
| 256 (INT 7340)      | 3                | 129 (T)           |
| 258 (INT 7348)      | 4                | 127, 129 (T)      |
| 259 (INT 7356)      | 4                | 129 (T)           |
| 260 (INT 7362)      | 4                | 129 (T)           |
| 261 (INT 7363)      | 4                | 129 (T)           |
| 262 (INT 7365)      | 5                | 129 (T)           |
| 272                 | 4                | 127, 129 (T)      |
| 292 (INT 7021)      | 2                | 129 (T)           |
| 293 (INT 7022)      | 3                | 129 (T)           |
| 294 (INT 7023)      | 4                | 127, 129 (T)      |
| 305                 | 5                | 129 (T)           |
| 308 (INT 7409)      | 5                | 129 (T)           |
| 352 (INT 7416)      | 5                | 129 (T)           |
| 353 (INT 7413)      | 5                | 129 (T)           |
| 354 (INT 7408)      | 5                | 129 (T)           |
| 356 (INT 7400)      | 5                | 129 (T)           |
| 391                 | 5                | 129 (T)           |
| 409 (INT 7448)      | 6                | 126               |
| 2002 (INT 7351)     | 4                | 127               |
| 2012                | 4                | 128, 129 (T)      |
| 2028                | 3                | 129 (T)           |
| 2037                | 5                | 129 (T)           |
| 2100 (INT 7344)     | 2                | 123               |
| 2121                | 2                | 129 (T)           |
| 2359 (INT 7350)     | 4                | 127               |
| 3002 (INT 7410)     | 5                | 129 (T)           |
| 3004 (INT 7403)     | 5                | 124               |
| 3034                | 5                | 125, 129 (T)      |
| 3035                | 5                | 129 (T)           |

|                |   |         |
|----------------|---|---------|
| 3043           | 5 | 129 (T) |
| 4181           | 6 | 126     |
| 4182           | 6 | 126     |
| 7070 (INT 70)  | 1 | 129 (T) |
| 7071 (INT 71)  | 1 | 129 (T) |
| 7072 (INT 72)  | 1 | 129 (T) |
| 7073 (INT 73)  | 1 | 129 (T) |
| 7702 (INT 702) | 1 | 129 (T) |
| 7703 (INT 703) | 1 | 129 (T) |
| 7705 (INT 705) | 1 | 129 (T) |
| 7706 (INT 706) | 1 | 129 (T) |
| 7707 (INT 707) | 1 | 129 (T) |



**SECTION – II****PERMANENT NOTICES****\*123 (19/24) INDIA – WEST COAST – Approaches to Port Pipavav; Port Pipavav – Accompanying Block.**

Source: NHO, Dehradun.

**Chart 2100 (INT 7344)** [previous update 104/23]

Insert accompanying block, centered on; 20° 55′·36N., 071° 30′·48E.

**Chart 2100 (INT 7344) (Plan)** [previous update 104/23]

Insert accompanying block, centered on; 20° 55′·29N., 071° 30′·98E.

**\*124 (19/24) INDIA – EAST COAST – Chennai Harbour – Accompanying Block, Legend.**

Source: NHO, Dehradun.

**Chart 3004 (INT 7403)** [previous update 088/24]

Insert accompanying block, centered on; 13° 06′·82N., 080° 18′·26E.

legend, “ Coastal Berth ”, centered on; 13° 05′·98N., 080° 18′·25E.

**\*125 (19/24) INDIA – EAST COAST – Krishnapatnam Port; Approaches to Krishnapatnam – Accompanying Block.**

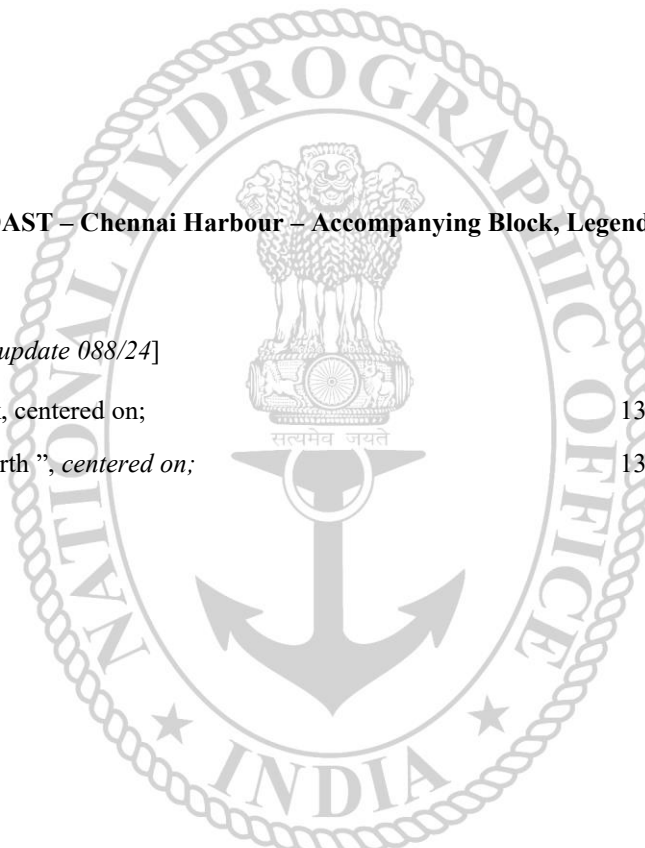
Source: NHO, Dehradun.

**Chart 3034** [previous update 044/23]

Insert accompanying block, centered on; 14° 14′·73N., 080° 08′·38E.

**Chart 3034 (Plan)** [previous update 044/23]

Insert accompanying block, centered on; 14° 15′·08N., 080° 07′·08E.



## \*126 (19/24) INDIA – ANDAMAN SEA NICOBAR ISLANDS – South Bay and Approaches- Port Limit, legend.

Source: The Gazette of India.

**Chart 409 (INT 7448)** [previous update 07/21] [Everest Spheroid]

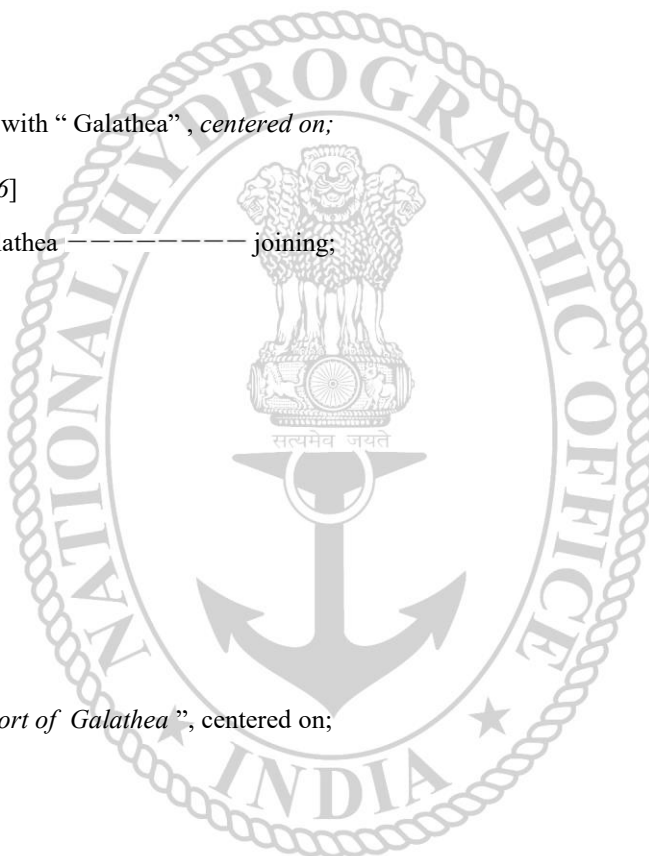
|         |  |  |
|---------|--|--|
| Insert  | limit of Port of Galathea ————— joining;                   | 06° 47′·48N., 093° 52′·79E.<br>06° 42′·02N., 093° 53′·94E.<br>06° 40′·66N., 093° 45′·47E.<br>06° 43′·45N., 093° 46′·70E.<br>06° 44′·23N., 093° 51′·24E.<br>06° 46′·47N., 093° 50′·55E. |
|         | legend, “ <i>Limit of port of Galathea</i> ”, centered on; | 06° 41′·48N., 093° 49′·82E.<br>06° 43′·45N., 093° 49′·18E.<br>06° 45′·25N., 093° 53′·05E.  |
| Replace | legend, “Galatea” with “Galathea”, centered on;            | 06° 48′·13N., 093° 50′·64E.  |

**Chart 4181** [previous update 125/16]

|         |  |  |
|---------|--|--|
| Insert  | limit of Port of Galathea ————— joining;                   | 06° 47′·80N., 093° 53′·12E.<br>06° 47′·77N., 093° 53′·12E.<br>06° 41′·98N., 093° 54′·34E.<br>06° 41′·00N., 093° 48′·23E.   |
|         | legend, “ <i>Limit of port of Galathea</i> ”, centered on; | and<br>06° 41′·00N., 093° 46′·04E.<br>06° 43′·41N., 093° 47′·10E.<br>06° 44′·19N., 093° 51′·64E.<br>06° 46′·99N., 093° 50′·78E.<br>06° 44′·50N., 093° 53′·78E.<br>06° 41′·52N., 093° 50′·99E.<br>06° 43′·73N., 093° 49′·15E. |
| Replace | legend, “(Galatea)” with “(Galathea)”, centered on;        | 06° 47′·90N., 093° 52′·00E.  |
|         | legend, “Galatea” with “Galathea”, centered on;            | 06° 48′·27N., 093° 50′·73E.  |


**Chart 4182** [previous update NE 15 Mar 2021]

|        |  |   |
|--------|--|---|
| Insert | limit of Port of Galathea ————— joining;                   | 06° 47′·50N., 093° 53′·18E.<br>06° 47′·77N., 093° 53′·12E.<br>06° 47′·80N., 093° 53′·12E. |
|        | legend, “ <i>Limit of port of Galathea</i> ”, centered on; | 06° 47′·61N., 093° 53′·17E.   |




**\*127 (19/24) INDIA – WEST COAST – Ports of New Mangalore and Mangalore – Wreck.**

Source: ROS, INS Sarvekshak.

**Chart 294 (INT 7023)** [previous update 097/24]Substitute  Wk, for  Wk, centered on; 12° 54'·85N., 074° 46'·09E.Delete  12° 50'·97N., 074° 48'·96E.**Chart 272** [previous update 153/23]Substitute  Wk, for  Wk, centered on; 12° 54'·85N., 074° 46'·09E.Delete  12° 50'·97N., 074° 48'·96E.

12° 48'·45N., 074° 49'·59E.

**Chart 258 (INT 7348)** [previous update 153/23]Substitute  Wk, for  Wk, centered on; 12° 54'·85N., 074° 46'·09E.Delete  12° 50'·97N., 074° 48'·96E.

12° 48'·45N., 074° 49'·59E.

**Chart 217** [previous update 140/23]Substitute  Wk, for  Wk, centered on; 12° 54'·85N., 074° 46'·09E.Delete  12° 50'·97N., 074° 48'·96E.

12° 48'·45N., 074° 49'·59E.

**Chart 2359 (INT 7350)** [previous update 113/23]Substitute  Wk, for  Wk, centered on; 12° 54'·85N., 074° 46'·09E.Delete  12° 50'·97N., 074° 48'·96E.

12° 48'·45N., 074° 49'·59E.

**Chart 2002 (INT 7351)** [previous update 113/23]Substitute  Wk, for  Wk, centered on; 12° 54'·85N., 074° 46'·09E.Delete  12° 50'·97N., 074° 48'·96E.

| *128 (19/24)           |                  | Miscellaneous updates to charts.   |
|------------------------|------------------|--|
| Source: NHO, Dehradun. |                  |  |
| Chart No.              | Previous Updates | Details  |
| 2012                   | 069/24           | Insert Chart No. 2111 and Magenta limit as follows:<br>08° 20'·80N., 076° 56'·50E.<br>08° 20'·80N., 077° 01'·85E.<br>08° 24'·30N., 077° 01'·85E.<br>08° 24'·30N., 076° 56'·50E.<br>08° 20'·80N., 076° 56'·50E. |
|                        |                  | Delete Chart No.2111 and Magenta limit as follows:<br>08° 21'·70N., 076° 57'·40E.<br>08° 21'·70N., 077° 00'·00E.<br>08° 23'·60N., 077° 00'·00E.<br>08° 23'·60N., 076° 57'·40E.<br>08° 21'·70N., 076° 57'·40E.  |



**Section – III****TEMPORARY AND PRELIMINARY NOTICES**

1. It is brought to the information to the users that same or all information contained in this Temporary Notices to mariner may have been included in the relevant ENC's.
2. New TPNMs are now part of ENC updates from 01 Oct 22 onwards.
3. All in force Temporary and Preliminary Notices are available for visualisation along with details of affected Charts and ENCs for mariners on **INDIAN WARNINGS INFORMATION AND NAVIGATION SERVICES (INDIA – WINS)** on [www.hydrobharat.gov.in](http://www.hydrobharat.gov.in).

| <b>*129 (T) (19/24)</b>   |                    | <b>INDIAN OCEAN – Northern Part – Wave Rider Buoys.</b> |  |
|---|--------------------|---|--|
| Source: INCOIS.   |                    |   |  |
| 1. Moored yellow coloured Wave Rider Buoys (WRB) are deployed by INCOIS in following positions:–  |                    |   |  |
| WRB Buoy  | Positions          |   |  |
| <b>WRB Gopalpur</b>   | <b>19° 15'.58N</b> | <b>084° 56'.55E</b>                                     |  |
| WRB Kozhikkode  | 11° 18'.02N        | 075° 39'.68E  |  |
| <b>WRB Krishnapatnam</b>  | <b>14° 16'.66N</b> | <b>080° 11'.58E</b>                                     |  |
| WRB Ratnagiri   | 16° 58'.60N        | 073° 15'.20E  |  |
| <b>WRB Seychelles</b>   | <b>04° 39'.46S</b> | <b>055° 52'.22E</b>                                     |  |
| WRB Tuticorin   | 08° 52'.98N        | 078° 17'.75E  |  |
| <b>WRB Veraval</b>  | <b>20° 52'.98N</b> | <b>070° 23'.45E</b>                                     |  |
| WRB Versova   | 19° 08'.10N        | 072° 44'.40E  |  |
| <b>WRB Visakhapatnam</b>  | <b>17° 38'.23N</b> | <b>083° 15'.96E</b>                                     |  |
| WRB Vizhinjam   | 08° 21'.58N        | 076° 59'.88E  |  |
| 2. All positions referred to WGS 84 datum.  |                    |   |  |
| 3. Vessels operating in vicinity are to maintain a safe distance from buoys and exercise caution.   |                    |   |  |
| <b>Charts Affected – 21 – 22 (INT 752) – 31 (INT 756) – 32 (INT 754) – 33 (INT 755) – 205 – 206 – 211 – 212 – 213 – 219 – 222 – 223 – 224 – 252 (INT 7325) – 253 (INT 7328) – 255 (INT 7334) – 256 (INT 7340) – 258 (INT 7348) – 259 (INT 7356) – 260 (INT 7362) – 261 (INT 7363) – 262 (INT 7365) – 272 – 292 (INT 7021) – 293 (INT 7022) – 294 (INT 7023) – 305 – 308 (INT 7409) – 352 (INT 7416) – 353 (INT 7413) – 354 (INT 7408) – 356 (INT 7400) – 391 – 2012 – 2028 – 2037 – 2121 – 3002 (INT 7410) – 3034 – 3035 – 3043 – 7070 (INT 70) – 7071 (INT 71) – 7072 (INT 72) – 7073 (INT 73) – 7702 (INT 702) – 7703 (INT 703) – 7705 (INT 705) – 7706 (INT 706) – 7707 (INT 707).</b> |                    |   |  |
| <b>Former INTM 095 (T)/24 is cancelled.</b>   |                    |   |  |

## SECTION – IV

### MARINE INFORMATION

#### 1. NAVTEX TRANSMISSION

Status of MSI Promulgation by NAVTEX Stations is as follows:-

|                                    |               |
|------------------------------------|---------------|
| Mauritius (Cassis)                 | - Operational |
| Seychelles (Mahe)                  | - Operational |
| Myanmar (Yangon, Myeik, Kyau Phyu) | - Operational |

NAVTEX stations along the Indian coast:-

| INTERNATIONAL NATIONAL NAVTEX FREQUENCY - 518 kHz |                |    |                           |      |      |      |      |      |
|---|----------------|----|---------------------------|------|------|------|------|------|
| Sl.   | Station Name   | BI | Broad Cast Timings in UTC |      |      |      |      |      |
|   |                |    | 0110                      | 0510 | 0910 | 1310 | 1710 | 2110 |
| (a)   | Veraval        | H  | 0110                      | 0510 | 0910 | 1310 | 1710 | 2110 |
| (b)   | Vengurla Point | J  | 0130                      | 0530 | 0930 | 1330 | 1730 | 2130 |
| (c)   | Muttam Point   | L  | 0150                      | 0550 | 0950 | 1350 | 1750 | 2150 |
| (d)   | Porto Novo     | O  | 0220                      | 0620 | 1020 | 1420 | 1820 | 2220 |
| (e)   | Vakalpudi      | Q  | 0240                      | 0640 | 1040 | 1440 | 1840 | 2240 |
| (f)   | Balasore       | S  | 0300                      | 0700 | 1100 | 1500 | 1900 | 2300 |
| (g)   | Keating Point  | V  | 0330                      | 0730 | 1130 | 1530 | 1930 | 2330 |

#### 2. MISIDENTIFYING FISHING BOATS AS PIRATE SKIFFS

All merchant vessels entering Indian EEZ are advised that dense fishing activity may be encountered off West Coast of India. Fishing is generally carried out by mechanized boats and single hull boats with outboard motors carrying 4-5 crews using long lines upto 50 NM from coast. The vessels traversing the nets are likely to be approached by fishing boats for safeguarding nets and lines and should not be mistaken as skiffs and PAG's. Masters of vessels to report any suspicious activity of fishing vessels immediately to MRCC (Mumbai) on telephone +91-22-24388065, 24316558, Email: - mrcc-west@indiancoastguard.nic.in. Any suspicious activity of skiffs/ boats to be photographed if possible. Merchant vessels with armed guards on board are to report presence of guards to Indian Navy/Coast Guard while transiting Indian EEZ.

#### 3. DISPLAY ANOMALIES IN ECDIS

(a) Mariners are advised that the International Hydrographic Organization (IHO) check data set shows that some ECDIS systems fail to display some significant underwater features in the standard display mode. The use of this check data set, issued through ENC service providers and available from the IHO website [www.iho.int](http://www.iho.int), to check the operation of ECDIS is strongly recommended. JRC has confirmed that certain versions of JRC ECDIS fail to display some types of wreck and obstructions, including stranded wrecks, in any display mode. Where JRC ECDIS is in use, paper charts should be the primary means of navigation until the ECDIS has been proved to operate correctly. See [www.jrc.co.jp/eng/product/marine/whatsnew/20120313/index.html](http://www.jrc.co.jp/eng/product/marine/whatsnew/20120313/index.html) for further information.

(b) Some Electronic Chart Display and Information Systems (ECDIS) may exhibit operating anomalies. The International Maritime Organization's (IMO) circular SN.1/CIRC.312 pages /imodocs.aspx (registration required) lists identified anomalies, Their characteristics and remedial advice. Mariners are reminded that they should access the International Hydrographic Organization (IHO) data presentation and performance check (DPPC) dataset (news links of <http://www.iho.int/srv1>) and ensure that all installed ECDIS units are checked.

#### 4. **SAFETY FAIRWAYS, RECOMMENDED ROUTES, TRAFFIC SEPARATION SCHEME**

The Director General Shipping has established Safety fairways, recommended routes and traffic separation scheme (TSS) in restricted Indian waters including the offshore development area to enhance safety of navigation. The details of coordinates are published in the fortnightly Indian Notices to Mariners.

- (a) **Safety Fairways:** An area within which permits are not granted for the erection of oil or gas related structures. The use of a safety fairway is not usually mandatory, but is recommended. Safety fairways have been promulgated in and round offshore development area in Arabian Sea up to the Exclusive Economic Zone (EEZ) due to increased weather related marine accidents and dense traffic. These are mandatory for all Indian ships and vessels transiting through the ODA and recommendatory for all foreign flag ships and vessels irrespective of size.
- (b) **Traffic Separation Schemes (TSS):** The TSS is mandatory for all Indian and foreign flag ships and vessels entering and leaving.

#### 5. **GAGAN SYSTEM COMMISSIONED FOR OPERATIONS**

The GAGAN System is now commissioned for safety of life, civil aviation, and en- route operations in addition to all other non-aviation applications. The GAGAN signal is being broadcasted through GSAT-8 and GSAT-10 with PRN127& 128 respectively. All the GPS users are requested to enable SBAS functionality in their receivers, configure it to receive PRN- 127& 128 and avail the benefits of GAGAN in terms of increased accuracy and reliability. There may be occasional signal outages due to system up-gradation activities.

#### 6. **Usage of Thuraya, Iridium and other such Satellite Communication in Indian Waters-Reg.**

- (a) The Directorate General of Shipping through DGS Order No. 02 of 2012 dated 17.05.2012 had banned the usage of Thuraya, Iridium and other such satellite in the Indian Waters.
- (b) Thuraya Satellite Equipment is not an integral part of Maritime Radio communication system under Global Maritime Distress and Safety Systems (GMDSS) and its usage is continued to be banned in Indian Waters.
- (c) Whereas, Regulation 4.1- GMDSS Satellite Providers, which emphasizes that, the Maritime Safety Committee shall determine the criteria, procedures and arrangements for the evaluation, recognition, review and oversight of the provision of recognized mobile satellite services in the GMDSS pursuant to the provisions of SOLAS Chapter-IV.
- (d) Whereas, Maritime Safety Committee vide Resolution MSC 451(99) dated 24 May 2018 had recognized Iridium Satellite LLC to provide Safety Voice, Short-Burst data and enhanced group calling services for use in the Global Maritime Distress and Safety System (GMDSS). The Iridium Satellite service is fully operational since December 2020 and being part of SOLAS Chapter - IV as one of the recognized mobile satellite service.
- (e) Under GMDSS, the usage of Iridium Mobile Satellite communication equipment in the Indian Waters are considered subject to the conditions as outlined under;
  - (i) Merchant ships may install and keep the Iridium equipment active in Indian Territorial waters, provided the equipment is registered and certified as per the prevailing rules of the Flag of the ship and is used only onboard ship and the portable Iridium sets may not be carried onto Indian Land Territory.
  - (ii) Iridium Satellite equipment shall be used in GMDSS exclusively for Maritime Radio communications relating to Distress and Safety, Search and Rescue and for receiving Maritime Safety Information (MSI) from ship's fixed installations only.
  - (iii) The ships transiting or visiting in Indian waters shall continue to declare IMEI number of the equipment in the Pre-Arrival Notification on Security (PANS).

- (f) The ship-owners, ship-masters and ship-agents shall mandatorily require to declare details of such satellite phones prior arrival into Indian Waters through the Pre-Arrival Notification on Security (PANS) systems.
- (g) The unauthorized usage of Thuraya, Iridium and other such Satellite equipment shall be prosecuted under Section-6 of Indian Wireless Act and Section-20 of Indian Telegraph Act.
- (h) The ship-Owners, Ship-Masters, Ship-Operators, Ship-Agents and other stake holders are intimated for strict compliance of this DGS Order.
- (j) This Directorate General of Shipping order No. 09 of 2023 supersedes previous DGS order No. 02 of 2012 dated 17.05.2012 and is entry into force with immediate effect.

## 7. **CAUTIONARY NOTE**

There is a finite amount of lag between publication of large and small scale Indian Nautical Charts. To avoid uncertainty the mariners are advised to use large scale charts for coastal navigation wherever applicable and available. In addition, mariners are to refer large scale charts in conjunction with small scale charts in areas where both overlap during both planning and conduct of passage.

## 8. **ADVISORY FOR ALL VESSELS NAVIGATING INDIAN WATERS**

- (a) All vessels navigating in Indian waters are cautioned to keep a sharp look-out for fishing vessels and small crafts, as there have been several incidents of collisions with such vessels in the past resulting in loss of innocent lives as well as damage to property.
- (b) It is further cautioned that all vessels need to exercise extreme care while navigating during hours of darkness as such vessels are generally of primitive built (wood/fibre/etc) due to which it may not be detected on ship's radar, especially during adverse weather conditions. Also, such vessels may not be properly lit, or sometimes, only one vessel may be lit among multiple vessels in a cluster.
- (c) The general areas of concern on the west coast of India are the areas of convergence and divergence of traffic, mainly between Mangalore to Kanyakumari (Cape Comorin). Further, in these areas, additional caution needs to be exercised and wide berth be given to all such vessels.
- (d) All fishing vessels are also cautioned to avoid fishing in areas having high density traffic. All fishing vessels are also required to always maintain proper lookout by sight, hearing and by all available means and comply with all applicable provisions of Collision Regulations.

**List of Indian Chart Agents**

|   |   |
|---|---|
| <p><b>M/s VDO Marine Instruments</b><br/>         PO Bag No – 645, 45/271,<br/>         Shanghar Building,<br/>         Corner of Bristow &amp; Naval Road,<br/>         Willingdon Island, Kochi – 682003<br/>         Tel: +91 4842667157<br/>         Fax: +91 4842667121<br/>         Email: <a href="mailto:atmain@md4.vsnl.net.in">atmain@md4.vsnl.net.in</a><br/>         Web: <a href="http://www.atmain.in">www.atmain.in</a></p>                          | <p><b>M/s Global Charts &amp; Nav. Aids Pvt. Limited</b><br/>         1A, Goa Mansion, Ground Floor,<br/>         58, Dr. Sunderlal Bahl Path (Goa Street),<br/>         Fort, Mumbai - 400 001<br/>         Tel: +91-22-22626318, 22626380<br/>         Fax: +91-22-22621488<br/>         Email: <a href="mailto:sales@globalcharts.in">sales@globalcharts.in</a><br/>         Web: <a href="http://www.globalcharts.com.sg">www.globalcharts.com.sg</a></p> |
| <p><b>SMS Marine Private Ltd</b><br/>         505, Raheja Arcade, Sector 11 CBD, Belapur,<br/>         Navi Mumbai – 400 614<br/>         Tel: +91-22-62233326, Fax: 022-67939504<br/>         Mobile: +91 9820 238 542<br/>         Email: <a href="mailto:info@c-map.co.in">info@c-map.co.in</a> ,<br/> <a href="mailto:raj.chakravorty@smsmap.com">raj.chakravorty@smsmap.com</a><br/>         Web: <a href="http://www.smsmaps.co.in">www.smsmaps.co.in</a></p> | <p><b>M/s JM Maritime Services</b><br/>         24/24C Kavarana Building,<br/>         Ground Floor, Wadi Bunder,<br/>         P.D. Mellow Road,<br/>         Masjid Bunder East, Mumbai – 400 009<br/>         Tel: +91 22 23736756, Fax: +91 22 - 23725083<br/>         Cell: +91 9820788357<br/>         Email : <a href="mailto:jmms@mtnl.net.in">jmms@mtnl.net.in</a> , <a href="mailto:charts@mtnl.net.in">charts@mtnl.net.in</a></p>                   |
| <p><b>M/s Lift o Marine</b><br/>         Allens Mansion, C6, Nungi Station Road,<br/>         Batanagar, Kolkata – 700 140<br/>         Tel/Fax: +91 33 24924283, +91 9836972027<br/>         Email: <a href="mailto:sankar@liftmarine.org">sankar@liftmarine.org</a>, <a href="mailto:liftmarine77@gmail.com">liftmarine77@gmail.com</a><br/>         Web: <a href="http://www.liftmarine.org">www.liftmarine.org</a></p>  | <p><b>M/s L. R. Marine Services</b><br/>         301, 3rd Floor, Biryah House,<br/>         265, Perin Nariman Street,<br/>         Fort, Mumbai - 400.001.<br/>         Tel: +91-22-2269 1535, Fax: +91-22-66359148<br/>         Mob: +91 8108926880/ +91 98214 60258<br/>         Email: <a href="mailto:lrcharts@gmail.com">lrcharts@gmail.com</a>, <a href="mailto:lrmarine@live.com">lrmarine@live.com</a></p>   |
| <p><b>M/s CNC</b><br/>         Office No. S-12-92<br/>         Haware's Centurion Premises Coop, Soc. Ltd,<br/>         Plot no 88-91, Sector 19, NERUL,<br/>         Navi Mumbai – 400 706<br/>         Tel: +91 22 22660017/ +91 22 49747575/ +91 7506097212<br/>         Cell No: +91 9920654848<br/>         Email: <a href="mailto:sales@emariner.net">sales@emariner.net</a><br/>         Web: <a href="http://www.emariner.net">www.emariner.net</a></p>     |   |

**SECTION – V****NAVAREA – VIII WARNINGS IN FORCE.**

- All in force NAVAREA and NAVTEX messages are available for visualisation along with details of affected Charts and ENC's for mariners on **INDIAN WARNINGS INFORMATION AND NAVIGATION SERVICES (INDIA – WINS)** on [www.hydrobharat.gov.in](http://www.hydrobharat.gov.in).
- For details of NAVAREA limits and organisation/ coordination, please refer to Notice No. 12 of the Special edition of Indian Notice to Mariners – 2020.
- NAVAREA VIII Warnings in force as on 01 Oct 24: -

|  |
|--|
| <b>2022 SERIES</b> - 134 237 519   |
| <b>2023 SERIES</b> - 161 178 386 455 484 574 703 733 741 748 750 929 1046 1057   |
| <b>2024 SERIES</b> - 180 188 215 317 465 481 499 539 550 551 584 587 600 604 640 669 691 707 709<br>728 729 778 784 791 794 797 810 812 817 822 831 833 835 837 843 846 847 848 849 850 851<br>852 853 854 855 856 |

- NAVAREA VIII Warnings issued during the period from 16 Sep 24 to 30 Sep 24 (both dates inclusive) are as tabulated below: -

|  |
|--|
| <b>820. India East Coast - off Visakhapatnam.</b> Charts IN 31 308 354 INT 7408. Firing scheduled from 170330 to 170600 UTC Sep 24 and 181030 to 181330 UTC Sep 24 in danger area bounded by 17-44.00N 084-05.00E, 17-44.00N 083-48.10E, 17-48.13N 083-42.10E, 17-58.00N 083-52.00E, 17-58.00N 084-19.00E. Wide berth from area advised.<br>2. Cancel this MSG 181430 UTC Sep 24.                |
| <b>821. India West Coast - off Ettikkulam.</b> Charts IN 22 218 258 INT 7348. Hydrographic survey will be carried out from 18 to 29 Sep 24 in area bounded within 11-58N to 12-14.40N and 075-05.50E to 075-14.35E. Wide berth requested.<br>2. Cancel this MSG 291830 UTC Sep 24.   |
| <b>822. India West Coast.</b> Charts IN 21 255 292 INT 7334. Rig move. Key Singapore (18-29.86N 072-15.01E). Refer to 113(T) of INTM 17/24. Wide berth requested.  |
| <b>823. Cancel NAVAREA VIII MSG 291/24 and this MSG. INTM 115 of 18/24 refers.</b>   |
| <b>824. India West Coast.</b> Charts IN 22 293 294 INT 752. Hydrographic survey will be carried out from 20 to 28 Sep 24 in areas bounded within (a) 14-30N to 15-00N and 072-30E to 073-30E (b) 15-30N to 16-00N and 072-10E to 072-40E (c) 16-55N to 17-25N and 071-00E to 071-30E (d) 16-15N to 16-45N and 071-15E to 071-45E. Wide berth requested.<br>2. Cancel this MSG 281830 UTC Sep 24. |
| <b>825. India East Coast - off Visakhapatnam.</b> Charts IN 31 354 391 INT 7408. Subsurface firing scheduled from 220001 to 220300 UTC Sep 24 in danger area bounded by 17-46.80N 084-01.80E, 17-52.80N 084-10.10E, 17-44.90N 084-16.50E, 17-38.80N 084-08.40E. Wide berth from area advised.<br>2. Cancel this MSG 220400 UTC Sep 24.   |
| <b>826. India East Coast - off Visakhapatnam.</b> Charts IN 31 354 7706 INT 756. Subsurface firing scheduled from 231030 to 231200 UTC Sep 24 in danger area bounded by 18-09.80N 084-26.50E, 18-09.20N 085-29.30E, 17-09.20N 085-28.30E, 17-09.80N 084-25.80E. Wide berth from area advised.<br>2. Cancel this MSG 231300 UTC Sep 24.   |
| <b>827. Bay Of Bengal - off Balasore.</b> Charts IN 31 7073 7706 INT 706. Experimental flight trials scheduled 25, 28 and 30 Sep 24 from 1230 to 1530 UTC in danger area bounded by 20-48.37N 087-02.58E, 18-14.72N 085-34.55E, 05-26.65N 085-46.02E, 05-52.58N 091-01.05E, 18-31.82N 089-02.15E, 20-48.77N 087-07.40E. Wide berth from area advised.<br>2. Cancel this MSG 301630 UTC Sep 24.   |
| <b>828. India West Coast - off Trivandrum.</b> Charts IN 22 222 261 INT 752. Rocket launch from Thumba (08-31.98N 076-52.05E) scheduled from 250530 to 250700 UTC Sep 24. Danger sector from launcher (a) Radius of 05 nm between azimuth 190 and 300 (b) Between radii of 45 nm and 75 nm and azimuth 220 and 260. Wide berth from area advised.<br>2. Cancel this MSG 250800 UTC Sep 24.       |
| <b>829. India East Coast - Chennai.</b> Charts IN 33 313 3001 INT 7400. Firing scheduled from 240830 to 240930 UTC Sep 24 in danger sector extending upto 11 nm between bearing 045 and 075 from 13-07.02N 080-18.01E. Wide berth from area advised.<br>2. Cancel this MSG 241030 UTC Sep 24.  |
| <b>830. India West Coast - off Daman.</b> Charts IN 209 254 292 INT 7331. Firing by CG aircraft scheduled from 230230 to 231130 UTC Sep 24 in danger area bounded within 20-26N to 20-40N and 072-27E to 072-40E. Wide berth from area advised.<br>2. Cancel this MSG 231230 UTC Sep 24.   |

|  |
|--|
| <p><b>831. India West Coast - Gulf of Kachchh.</b> Charts IN 21 203 2068 INT 7319. North cardinal buoy (22-34.1N 069-18.35E) unlit.</p>  |
| <p><b>832. NAVAREA VIII - WARNINGS in force as on 20 Sep 2024:</b><br/> <b>2022 Series</b> - 134 237 519<br/> <b>2023 Series</b> - 161 178 386 455 484 574 703 733 741 748 750 929 1046 1057<br/> <b>2024 Series</b> - 180 188 215 317 465 481 499 539 550 551 584 587 600 604 640 669 691 707 709 728 729 776 778 781 782 784 786 787 789 791 794 797 810 811 812 813 816 817 821 822 824 825 826 827 828 829 830 831<br/> (a) NAVAREA VIII warnings less than 42 days promulgated via safetynet.<br/> (b) Text of NAVAREA VIII warning inforce including those which no longer broadcast available in <a href="http://www.hydrobharat.gov.in">www.hydrobharat.gov.in</a>.<br/> 2. Cancel this MSG 271000 UTC Sep 24.</p> |
| <p><b>833. Southern Indian Ocean.</b> Charts IN 7071 7073 INT 73. Rocket debris predicted from 242300 to 250500 UTC Sep 24 in danger area bounded by 16-50S 091-51E, 16-46S 091-17E, 11-25S 092-02E, 11-29S 092-35E. Wide berth from area advised.<br/> 2. Cancel this MSG 250600 UTC Sep 24.</p>  |
| <p><b>834. Lakshadweep Sea - Minicoy I.</b> Charts IN 22 273 2006 INT 752. Firing scheduled from 250130 to 251030 UTC Sep 24 in danger area bounded by 08-15.36N 073-04.50E, 08-14.89N 073-03.32E, 08-16.53N 073-03.30E, 08-16.57N 073-03.43E. Wide berth from area advised.<br/> 2. Cancel this MSG 251130 UTC Sep 24.</p>  |
| <p><b>835. India East Coast - off Gopalpur.</b> Charts IN 31 305 353 INT 7413. Army air defence firing scheduled from 26 Sep to 06 Oct 24 from 0130 to 0830 UTC and 0930 to 1430 UTC in danger area bounded by (a) 19-14.6N 084-53.7E (b) 19-07.39N 085-35.94E (c) 18-33.61N 084-53.74E and arc of 41 nm radius joining point b and c. Wide berth from area advised.<br/> 2. Cancel this MSG 061530 UTC Oct 24.</p>  |
| <p><b>836. India West Coast - Gulf of Kachchh.</b> Charts IN 21 2018 2080 INT 7321. Mungra reef LT (22-45.60N 070-11.01E) unlit.</p>   |
| <p><b>837. India West Coast - off Mumbai.</b> Charts IN 21 255 292 INT 7021. Acoms 11 progressing pipeline survey in vicinity of 18-29.42N 072-14.73E, 18-34.98N 072-14.42E, 19-37.85N 071-17.77E, 19-32.30N 071-23.98E, 19-26.03N 071-12.95E, 19-16.74N 071-25.54E. Wide berth requested.<br/> 2. Cancel this MSG 221830 UTC Oct 24.</p>  |
| <p><b>838. India West Coast - off Mormugao.</b> Charts IN 22 293 294 7705 INT 7023. Subsurface firing scheduled from 260130 to 261630 UTC Sep 24 in danger areas bounded by (a) 14-49.2N 073-20.4E, 13-54.9N 073-46.1E, 13-44N 073-18E, 14-00N 072-26E, 14-33N 071-26E, 15-36N 071-50E (b) 16-24N 072-09E, 15-48.2N 072-48.2E, 14-56N 073-07.2E, 15-36N 071-50E. Wide berth from area advised.<br/> 2. Cancel this MSG 261730 UTC Sep 24.</p>  |
| <p><b>839. Andaman Sea - off Port Blair.</b> Charts IN 41 405 473 INT 7440. Firing scheduled 25 and 26 Sep 24 from 0930 to 1200 UTC in danger area bounded by 11-39.57N 092-46.23E, 11-40.5N 092-47E, 11-38.58N 092-53.07E, 11-32.73N 092-48.25E. Wide berth from area advised.<br/> 2. Cancel this MSG 261300 UTC Sep 24.</p>   |
| <p><b>840. India West Coast - off Kochi.</b> Charts IN 22 220 259 2004 INT 7356. Firing by aircraft scheduled from 25 to 30 Sep 24 from 0300 to 1130 UTC in danger area bounded by 09-50N 076-08E, 09-55N 076-06E, 09-54.03N 076-01.01E, 09-46.52N 076-03.30E. Wide berth from area advised.<br/> 2. Cancel this MSG 301230 UTC Sep 24.</p>  |
| <p><b>841. Lakshadweep Sea - off Kavaratti I.</b> Charts IN 268 273 2023 INT 7353. Firing scheduled from 270130 to 271200 UTC Sep 24 in danger area bounded by 10-33.32N 072-38.05E, 10-32.54N 072-38.72E, 10-31.92N 072-37.90E, 10-32.60N 072-37.25E. Wide berth from area advised.<br/> 2. Cancel this MSG 271300 UTC Sep 24.</p>  |
| <p><b>842. India East Coast - off Visakhapatnam.</b> Charts IN 31 308 354 391 INT 7408. Firing scheduled 27 and 28 Sep 24 from 0300 to 1030 UTC in danger area bounded by 17-44N 084-05E, 17-44N 083-48E, 17-48.13N 083-42E, 17-58N 083-52E, 17-58N 084-19E. Wide berth from area advised.<br/> 2. Cancel this MSG 281130 UTC Sep 24.</p>  |
| <p><b>843. Gulf Of Martaban - off Myanmar.</b> Charts IN 41 7706 BA 830 INT 706. MV Hein Pyae Min reported sunk in approximate position 16-06.15N 097-29.11E. Mariners to exercise caution.</p>  |
| <p><b>844. Cancel NAVAREA VIII MSG 836/24 and this MSG.</b></p>  |
| <p><b>845. Sri Lanka South Coast - off Galle.</b> Charts IN 33 226 264 INT 755. Srilankan fishing boat reported adrift in approximate position 05-50N 080-39E at 220730 UTC Sep 24. Mariners to exercise caution.<br/> 2. Cancel this MSG 281201 UTC Sep 24.</p>   |
| <p><b>846. Gulf Of Mannar - off Kanyakumari.</b> Charts IN 32 224 262 INT 754. Kaliasman Thunai progressing survey in areas bounded by (a) 08-33.39N 078-07.98E, 08-32.50N 078-07.58E, 08-31.07N 078-07.43E, 08-29.80N 078-07.82E, 08-29.83N 078-10.02E, 08-35.30N 078-10.23E, 08-35.31N 078-08.37E (b) 08-04.97N 077-30.54E, 08-06.06N 077-25.13E, 08-03.71N 077-25.05E, 08-02.76N 077-28.91E, 08-02.55N 077-33.16E, 08-04.70N 077-33.07E, 08-04.72N 077-32.33E. Wide</p>   |

|  |
|--|
| <p><b>846. Continued.</b><br/>berth of 02 nm requested.<br/>2. Cancel this MSG 311830 UTC Oct 24.</p>  |
| <p><b>847. Gulf Of Mannar - Off Kanyakumari.</b> Charts IN 32 223 262 INT 754. Lidar buoy deployed at 07-54.16N 077-39.84E for meteorological and oceanographic survey. Wide berth of 02 nm requested.<br/>2. Cancel this MSG 261830 UTC Dec 24.</p>   |
| <p><b>848. Bay of Bengal.</b> Charts IN 31 7073 7706 INT 706. Experimental flight trials scheduled 03 and 04 Oct 24 from 1230 to 1530 UTC in danger area bounded by 20-50.37N 087-00.80E, 18-14.70N 085-34.58E, 08-08.85N 085-59.42E, 08-30.40N 090-21.30E, 18-31.78N 089-02.18E, 20-51.03N 087-08.83E. Wide berth from area advised.<br/>2. Cancel this MSG 041630 UTC Oct 24.</p>  |
| <p><b>849. India East Coast - off Visakhapatnam.</b> Charts IN 31 354 391 INT 7408. Subsurface firing scheduled 01 and 02 Oct 24 from 0030 to 0730 UTC in danger area bounded within 17-10N to 17-30N and 083-45E to 084-05E. Wide berth from area advised.<br/>2. Cancel this MSG 020830 UTC Oct 24.</p>  |
| <p><b>850. India West Coast - off Porbandar.</b> Charts IN 21 252 292 INT 7021. Hydrographic survey will be carried out on 30 Sep, 02 Oct and from 05 to 15 Oct 24 in area bounded by 22-03.50N 068-24.90E, 22-03.50N 068-56.60E, 21-25.95N 069-12.80E, 21-25.95N 068-24.90E. Wide berth requested.<br/>2. Cancel this MSG 151830 UTC Oct 24.</p>  |
| <p><b>851. India West Coast - off Porbandar.</b> Charts IN 21 204 252 271 292 INT 7021. IAF firing from Kathiawar range scheduled 01, 03 and 04 Oct 24 from 0330 to 0930 UTC in danger area bounded by 22-12N 068-36.33E, 21-15.5N 069-04E, 21-09N 069-40E, 21-15.5N 069-42.5E, 22-05.75N 068-49E. Wide berth from area advised.<br/>2. Cancel this MSG 041030 UTC Oct 24.</p>   |
| <p><b>852. NAVAREA VIII - WARNINGS in force as on 27 Sep 2024.</b><br/><b>2022 Series</b> - 134 237 519<br/><b>2023 Series</b> - 161 178 386 455 484 574 703 733 741 748 750 929 1046 1057<br/><b>2024 Series</b> - 180 188 215 317 465 481 499 539 550 551 584 587 600 604 640 669 691 707 709 728 729 776 778 782 784 791 794 797 810 812 813 817 821 822 824 827 831 833 835 837 840 842 843 845 846 847 848 849 850 851<br/>(a) NAVAREA VIII warnings less than 42 days promulgated via safetynet.<br/>(b) Text of NAVAREA VIII warning inforce including those which no longer broadcast available in <a href="http://www.hydrobharat.gov.in">www.hydrobharat.gov.in</a>.<br/>2. Cancel this MSG 041000 UTC Oct 24.</p> |
| <p><b>853. Andaman Sea - off South Andaman I.</b> Charts IN 33 41 473 INT 7031. Firing by aircraft scheduled 02, 04, 09, 11, 16, 18, 23, 25 and 30 Oct 24 from 0430 to 0700 UTC in danger area bounded by 11-40N 092-27E, 11-43N 092-16E, 11-52N 092-19E, 11-48N 092-29E. Wide berth from area advised.<br/>2. Cancel this MSG 300800 UTC Oct 24.</p>  |
| <p><b>854. Bay Of Bengal - off Bangladesh.</b> Charts IN 31 BA 90 817 INT 756. Firing by Bangladesh navy scheduled 01 to 31 Oct 24 (excluding Fridays and Saturdays) from 0001 to 1600 UTC in danger areas bounded by (a) 21-20.83N 090-34E, 21-41N 091-14E, 21-20.83N 091-28E, 21-00N 090-47.83E (b) 20-07N 090-52E, 20-22N 091-06E, 20-00N 091-36E, 19-44N 091-21E (c) 20-22N 091-06E, 20-46.5N 091-31E, 20-24N 091-59E, 20-00N 091-36E (d) 21-18N 089-31E, 21-18N 089-50E, 21-04N 089-54E, 21-04N 089-34E (e) 20-58N 089-34E, 20-58N 089-54E, 20-34N 089-54E, 20-34N 089-34E. Wide berth from area advised.<br/>2. Cancel this MSG 311700 UTC Oct 24.</p>   |
| <p><b>855. India West Coast - off Mumbai.</b> Charts IN 21 255 292 INT 7021. Sai Sowbaghya progressing pipeline survey in vicinity of 19-12.79N 072-06.67E, 19-05.34N 072-06.88E, 18-48.40N 072-20.03E, 18-34.39N 072-16.73E, 18-42.56N 072-20.41E, 20-36.02N 072-02.23E. Wide berth requested.<br/>2. Cancel this MSG 311830 UTC Oct 24.</p>  |
| <p><b>856. India East Coast.</b> Charts IN 32 357 INT 7397. Rig move. DDKG1 (12-03.5N 080-24.25E). Refer to 114(T) of INTM 17/24. Wide berth requested.</p>  |



**SECTION – VI**  
**CORRECTIONS TO SAILING DIRECTIONS (PILOTS)**

NIL

**SECTION – VII**  
**CORRECTIONS TO LIST OF LIGHTS**

| No               | Name & Location                               | Position<br>(Lat-Long)   | Characteristics | Ht.<br>(mts) | Range<br>(miles) | Structure &<br>Height (mts)                          | Remarks                             |
|------------------|---|--------------------------|-----------------|--------------|------------------|--|-------------------------------------|
| <b>D6894-05</b>  | - Ldg Lts 140°. Rear.<br>Kangani              | 12 43-74 S<br>45 10-95 E | VQ W            | ..           | ..               | Beacon<br>5<br>*                                     | Front D6894. Occas<br>*             |
| <b>D7083-95</b>  | Port Raiatea. Sainte<br>Marie. E Breakwater   | 20 53-51 S<br>55 32-26 E | FI R 2-5s       | 11           | 3                | White metal tower,<br>red top                        | <b>TE 2024</b><br>*                 |
| <b>D7085-15</b>  | Sainte-Rose. Tenon                            | 21 07-50 S<br>55 47-20 E | Q R             | 4            | 2                | White round post,<br>red top                         | <b>TE 2024</b><br>*                 |
| <b>D7088-5</b>   | Port de Sainte Pierre. Ldg<br>Lts 354°. Front | 21 20-75 S<br>55 28-64 E | Q W             | 8            | 5                | White □, black<br>stripe                             | <b>TE 2024</b><br>*                 |
| <b>D7315-38</b>  | - <b>Al Qibliyah</b>                          | 17 29-74 N<br>56 20-48 E | FI W 10s        | 95           | <b>20</b>        | GRP tower, red<br>and white bands<br>10              | <b>TE 2024</b>                      |
| - -              |   | ..                       | AIS             | ..           | ..               | ..   | MMSI No 994611001<br>*              |
| <b>D7628</b>     | SHATT AL ARAB<br>Remove from list; deleted    |                          |                 |              |                  |  |                                     |
| <b>D7694-1</b>   | Bandar-e Charak                               | 26 43-37 N<br>54 17-01 E | FI G 5s<br>*    | 4<br>*       | 7                | Green Δ on green<br>pile                             | ..<br>*                             |
| <b>D7716-3</b>   | Abkuhi. N Breakwater                          | 25 24-50 N<br>59 07-84 E | FI R 5s<br>*    | 5<br>*       | 5                | Red tower beacon<br>*                                | ..<br>*                             |
| <b>D7716-4</b>   | Abkuhi. S Breakwater                          | 25 24-42 N<br>59 07-84 E | FI G 5s<br>*    | 4<br>*       | 5                | Green tower<br>beacon<br>*                           | ..<br>*                             |
| <b>D9162-57</b>  | Remove from list; deleted                     |                          |                 |              |                  |  |                                     |
| <b>D9162-575</b> | Remove from list; deleted                     |                          |                 |              |                  |  |                                     |
| <b>D9162-58</b>  | Shirinu. Breakwater Head                      | 27 35-80 N<br>52 29-70 E | FI(2)R 8s<br>*  | 5            | 8                | Red beacon □<br>topmark<br>*                         | ..                                  |
| <b>D9162-59</b>  | Remove from list; deleted                     |                          |                 |              |                  |  |                                     |
| <b>F0378</b>     | - Pirotan Island. 1.4M NE<br>(Mawadi Point)   | 22 37-23 N<br>69 58-28 E | FI R 10s        | 5            | 5                | White pyramidal<br>concrete tower, red<br>bands<br>8 | <i>fl 1.</i><br><b>TE 2024</b><br>* |
| <b>F1263-4</b>   | - Karang Sibangon                             | 01 40-69 N<br>98 46-32 E | FI W 5s<br>*    | 17<br>*      | 12               | Beacon<br>*  | <i>fl 0-25</i><br>*                 |
| <b>F1263-8</b>   | - Sibolga. Pulau Palak                        | 01 46-21 N<br>98 44-71 E | FI W 5s<br>*    | 17<br>*      | 12               | Beacon<br>*  | <i>fl 0-25</i><br>*                 |
| <b>F1291-2</b>   | Remove from list; deleted                     |                          |                 |              |                  |  |                                     |

## 7.2

|                 |                                  |                           |            |    |    |                             |                |
|-----------------|----------------------------------|---------------------------|------------|----|----|-----------------------------|----------------|
| <b>F1291-3</b>  | Remove from list; deleted        |                           |            |    |    |                             |                |
| <b>F1291-4</b>  | Teluk Meulaboh. PLN<br>Naga Raya | 04 05-93 N<br>96 11-68 E  | FI G 4s    | 16 | 10 | Green single pipe<br>beacon | <i>f/ 0-5</i>  |
| *               | *                                | *                         | *          | *  | *  | *                           | *              |
| <b>F1291-45</b> | Teluk Meulaboh. PLN<br>Naga Raya | 04 05-86 N<br>96 11-54 E  | FI R 5s    | 18 | 10 | Red single pipe<br>beacon   | <i>f/ 0-5</i>  |
| *               | *                                | *                         | *          | *  | *  | *                           | *              |
| <b>F1558-5</b>  | - Pulau Katak                    | 04 09-34 N<br>100 37-13 E | FI WRG 14s | 35 | .. | White brick tower<br>11     | <b>TE 2024</b> |
|                 |                                  |                           |            |    |    |                             | *              |

**SECTION – VIII**  
**CORRECTION TO LIST OF RADIO SIGNALS**

**INP 31(1), 2019**

*(Last correction: Edition No. 14 dated 16 July 2024)*

NIL

**INP 31(2), 2019**

*(Last correction: Edition No. 18 dated 16 Sep 2024)*

**PAGE 38, INDIA, Diu Head Lt.**

*Delete entry:*

**INP 31(5), 2021**

*(Last correction: Edition No. 13 dated 01 July 2024)*

NIL

**INP 31(6), 2023**

*(Last correction: Edition No. 15 dated 01 Aug 2024)*

**PAGE 06, BANGLADESH, CHITTAGONG, Pilots, PROCEDURE,**

**Para 2, section (e),**

*Delete and replace by:*

(e) **Pilot boards** in the following positions:

- (i) 22°11'83N 91°46'70E
- (ii) 21°35'10N 91°48'70E (Matarbari outer anchorage area)
- (iii) 21°38'00N 91°49'70E (Matarbari Channel)

**PAGE 68, INDIA, KRISHNAPATNAM, Port, CONTACT DETAILS**

**section.**

*Delete and replace by:*

**CONTACT DETAILS:**

**Marine Port Control**

Call: Krishnapatnam Port Control

VHF Channel: Ch 16; 12 13 14

Telephone: +91(0)8712615102

E-mail: port.control@adani.com

**Port Operation Centre**

Call: Adani Krishnapatnam Port Limited (AKPL)

Telephone: +91(0)9701702027

E-mail: kpcl.poc@adani.com

Website: www.adaniports.com

**SECTION – IX**  
**CORRECTIONS TO MISCELLANEOUS NAUTICAL PUBLICATIONS**

NIL

## SECTION – X

### REPORTING OF NAVIGATIONAL DANGERS

#### Appeal to all Mariners

1. Mariners at sea whilst on passage, or whilst entering / leaving ports / Harbour and other waterways, are requested to look out for new or suspected dangers to navigation, changes in aids to navigation, or corrections to published charts and Sailing Directions. Whenever any such changes / dangers are observed, mariners are requested to notify the same to the Chief Hydrographer to the Government of India at the following address: -

National Hydrographic Office  
107-A, Rajpur Road,  
Dehradun - 248001  
(Uttarakhand), India

e-mail : [msis-inho@navy.gov.in](mailto:msis-inho@navy.gov.in), [inho@navy.gov.in](mailto:inho@navy.gov.in)  
Fax No. : +91-135- 2748373  
Web : [www.hydrobharat.gov.in](http://www.hydrobharat.gov.in)

#### Instructions for filling up IH 102

2. Kindly follow the instructions below in order to help the Hydrographic Office (the recipient) to quickly issue NAVAREA warning / Notice to Mariners for the benefit of all other mariners at sea.

#### Position Reporting

3. Accurate position or knowledge of position error is of great importance. Latitude and Longitude should only be used to specify position details when they have been fixed by GPS or Astronomical Observations. A full description of the method, equipment, time and datum (WGS 84/Everest/Other) used should be given. When position is defined by sextant angles or bearings (true or magnetic to be specified), more than two bearings should be used in order to provide a redundancy check. Distances observed by Radar should be corrected for index errors. Where position is derived after the event, from other observations and/or Dead Reckoning, the methodology of deriving the position should be included.

4. Paper Charts. A copy/tracing of largest scale chart is the best medium for forwarding details, the alterations and additions being shown thereon in red, but adequate details from the chart must be traced in black ink to enable the amendments to be fitted correctly.

5. ENCs. A Screen shot of largest scale usage band ENC with the alterations and additions being shown thereon in red. If it is to report an issue with the display of an ENC, a screen shot of the affected cell should be sent along with details of the ECDIS make and version in use at the time.

#### Depth Reporting

6. When soundings are obtained using echo sounders, the echo sounding trace should be duly annotated with date, times, position, depths, etc., and forwarded with the IH102. It is important to state whether the echo sounder is set to register depths below the surface or below the keel; in the latter case the vessel's draught should be given. Time and date should be given in order that corrections for the height of the tide may be made where necessary. The make, name and type of echo sounder should also be given.

7. For modern echo sounders that use electronic 'range gating', care should be taken that the correct range scale and appropriate gate width are in use. Older electro-mechanical echo sounders frequently record signals from echoes received back after one or more rotations of the stylus have been completed. Thus with a set whose maximum range is 500m, an echo recorded at 50m may be from depths of 50m, 550m or even 1050m. Soundings recorded beyond the set's nominal range can usually be recognised by the following:

- (a) The trace being weaker than normal for the depth recorded;
- (b) The trace passing through the transmission line;
- (c) The feathery nature of the trace.

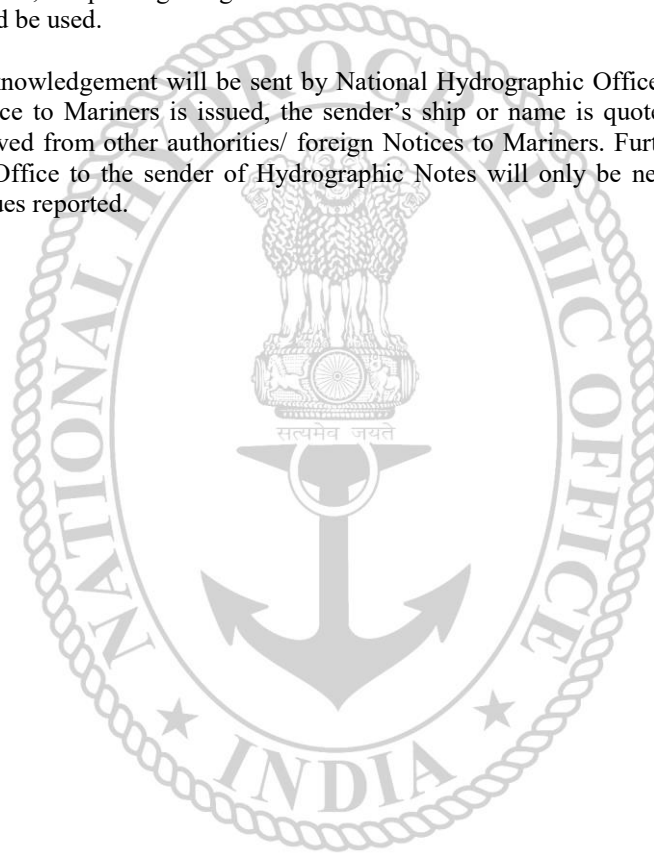
As a check that apparently shoal soundings are not due to echoes received beyond the set's nominal range, soundings should be continued until reasonable agreement with charted soundings is reached. However, soundings received after one or more rotations of the stylus can still be useful and should be submitted if they show significant differences from the charted depths. Efforts should be made to identify and negate false echoes if any. The Mariners Handbook (NP100) and Notice 15 Special Edition of Notice to Mariners may be consulted.

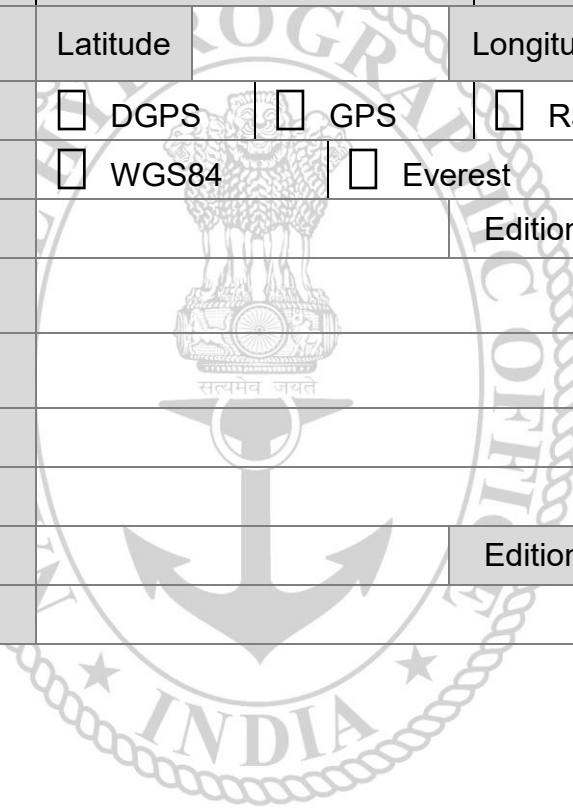
8. Reports which cannot be confirmed or are lacking in certain details should not be withheld. Shortcomings should be stressed and any firm expectation of being able to check the information on a succeeding voyage should be notified.

9. Reports of **shoal soundings**, uncharted dangers and aids to navigation out of order should, at the mariner's discretion, also be made by radio to the nearest coast radio station. The draught of modern tankers in such that any uncharted depth under 30 meters or 15 fathoms may be of sufficient importance to justify a radio message.

10. Changes to Port information should be forwarded on Form IH.102A together with form IH.102. Form 102A contains the information required for Sailing Directions and should be used as an *aide memoir*. The Mariners Handbook, NP100, Chapter 8 gives general instructions. Where there is insufficient space on the forms an additional sheet should be used.

***Please Note:*** - An acknowledgement will be sent by National Hydrographic Office for Hydrographic Notes, on receipt. When a Notice to Mariners is issued, the sender's ship or name is quoted as authority unless the information is also received from other authorities/ foreign Notices to Mariners. Further, communication from National Hydrographic Office to the sender of Hydrographic Notes will only be necessary to verify unusual features or abnormal values reported.



| <b>HYDROGRAPHIC NOTE</b>  |   |                                  |                                       | <b>IH.102<br/>(Revised 2012)</b> |                                    |
|---|---|----------------------------------|---------------------------------------|----------------------------------|------------------------------------|
| For Forwarding information for Indian Charts, ENCs and Publications and reporting of ENC related issues |   |                                  |                                       |                                  |                                    |
| Date  |   |                                  | Ref. Number                           |                                  |                                    |
| Name of the Ship or Sender  |   |                                  |                                       |                                  |                                    |
| Address   |   |                                  |                                       |                                  |                                    |
| Tel/FAX/E-mail address  |   |                                  |                                       |                                  |                                    |
| Observation Date  |   |                                  | Time (UTC/IST)                        |                                  |                                    |
| Object of Changes Observed<br>(Tick appropriate)  | <input type="checkbox"/> Bathymetry       |                                  | <input type="checkbox"/> Nav. Dangers |                                  | <input type="checkbox"/> Nav. aids |
|   | <input type="checkbox"/> Designated Areas |                                  | <input type="checkbox"/> Others       |                                  |                                    |
| Geographical Position<br>(See Instructions Overleaf)  | Latitude                                  |                                  | Longitude                             |                                  |                                    |
| Position Method   | <input type="checkbox"/> DGPS             | <input type="checkbox"/> GPS     | <input type="checkbox"/> Radar        | <input type="checkbox"/> Others  |                                    |
| Datum Used  | <input type="checkbox"/> WGS84            | <input type="checkbox"/> Everest |                                       | <input type="checkbox"/> Others  |                                    |
| Charts Affected   |   |                                  |                                       | Edition                          |                                    |
| Latest Edition of Indian Notices to Mariners Held   |   |                                  |                                       |                                  |                                    |
| Tracing/Plot/Photograph if enclosed   |   |                                  |                                       |                                  |                                    |
| ENCs Affected   |   |                                  |                                       |                                  |                                    |
| Latest Update Disk Held   |   |                                  |                                       |                                  |                                    |
| Publication Affected  |   |                                  |                                       | Edition                          |                                    |
| Page No./Light No. etc  |   |                                  |                                       |                                  |                                    |
| Details:  |   |                                  |                                       |                                  |                                    |
|                      |   |                                  |                                       |                                  |                                    |
| Limitations if any in Reporting the Changes Above   |   |                                  |                                       |                                  |                                    |
| Details of Documents/Photos attached:   |   |                                  |                                       |                                  |                                    |
| Signature of the Master/Reporter/Observer   |   |                                  |                                       |                                  |                                    |



| <b>HYDROGRAPHIC NOTE FOR PORT INFORMATION</b><br>(To accompany Form IH.102) |          | <b>IH.102A</b><br>(Revised 2012) |           |
|---|----------|----------------------------------|-----------|
| Date  |          | Ref. No.                         |           |
| Name of the Ship or Sender  |          |                                  |           |
| Address   |          |                                  |           |
| Tel/Fax/E-mail  |          |                                  |           |
| <b>1. NAME OF PORT</b>  |          |                                  |           |
| Location  | Latitude |                                  | Longitude |
| <b>2. GENERAL REMARKS</b>   |          |                                  |           |
| Principal activities and trade  |          |                                  |           |
| Number of ships and tonnage handled per year                                |          |                                  |           |
| Maximum size of draught of vessel handled                                   |          |                                  |           |
| Copy of Port handbook (if available)  |          |                                  |           |
| <b>3. ANCHORAGES</b>  |          |                                  |           |
| Type / Purpose  |          |                                  |           |
| Minimum depth at anchorage  |          |                                  |           |
| Shelter afforded  |          |                                  |           |
| Holding ground  |          |                                  |           |
| Recommended pilotage to the anchorage                                       |          |                                  |           |
| <b>4. PILOTAGE</b>  |          |                                  |           |
| Authority for request   |          |                                  |           |
| Embarkation position  |          |                                  |           |
| Regulations   |          |                                  |           |
| Documents to be provided  |          |                                  |           |
| Recommended pilotage to approach of Harbour and Berths                      |          |                                  |           |
| Information on VTMS   |          |                                  |           |
| <b>5. DIRECTIONS</b>  |          |                                  |           |
| Entry and Berthing Information  |          |                                  |           |
| Tides (Height)  |          |                                  |           |
| Tidal Stream Information  |          |                                  |           |
| Wind Speed and Direction  |          |                                  |           |
| Navigational Aids (Beacons / Buoys / Lights / Etc.)                         |          |                                  |           |
| <b>6. POLLUTION CONTROL</b>   |          |                                  |           |
| Local regulation in force (If Any)  |          |                                  |           |
| <b>7. TUGS</b>  |          |                                  |           |
| Number available / Tug type   |          |                                  |           |
| Maximum HP / Bollard pull   |          |                                  |           |

| <b>7. TUGS (Continued)</b>   |  |
|--|--|
| Requesting authority   |  |
| Availability timing / Communication  |  |
| Hiring charges   |  |
| <b>8. BERTHING AND WHARVES</b>   |  |
| Type & Number of berths available  |  |
| Length   |  |
| Depth alongside  |  |
| Facilities available   |  |
| Procedure for requesting berth & hiring charges                                    |  |
| <b>9. CARGO HANDLING</b>   |  |
| Containers   |  |
| Lighters & Ro-Ro etc.  |  |
| <b>10. CRANES</b>  |  |
| Brief details of Max. lifting capacity, Height of boom at wharf level and Outreach |  |
| Container handling facilities  |  |
| <b>11. BRIDGES</b>   |  |
| Vertical clearance   |  |
| <b>12. REPAIRS</b>   |  |
| Hull machinery and underwater  |  |
| Ship and Boat yards  |  |
| Docking or Slipway facilities (Size/ Dimensions of vessels handled)                |  |
| Hards and Ramps  |  |
| Divers / Diving assistance   |  |
| <b>13. SERVICES</b>  |  |
| Radio / FAX / Telephone / Internet etc.  |  |
| Medical  |  |
| Quarantine   |  |
| Consul   |  |
| Ship chandlery and Stevedores  |  |
| Compass adjustment   |  |
| Tank cleaning  |  |
| Hull painting  |  |
| Police / Ambulance / Firefighting (Fixed and Mobile facilities)                    |  |
| Nav. Warning and Weather bulletin  |  |
| Garbage disposal / Waste oil disposal  |  |
| Helicopter landing facilities  |  |

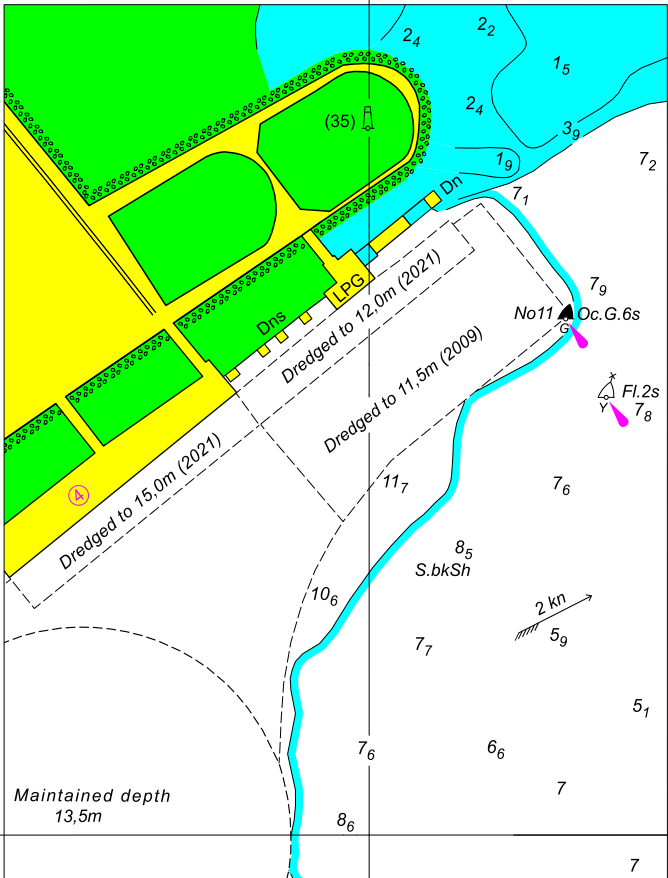
|  |  |
|--|--|
| <b>14. RESCUE &amp; DISTRESS</b>   |  |
| Salvage, Lifeboat, Life guards, etc  |  |
| <b>15. SUPPLIES</b>  |  |
| Fuel (Type, Quantities & Method of delivery)   |  |
| Fresh water (Method of delivery and Rate of supply)  |  |
| Provisions   |  |
| Chart agents   |  |
| <b>16. COMMUNICATIONS</b>  |  |
| Road, Rail and Air services available  |  |
| Nearest airport or airfield  |  |
| Port Radio and Information Service (Frequencies and Operating Hours)                           |  |
| <b>17. PORT AUTHORITY</b>  |  |
| Designation, Address, Telephone, E-mail Address and Website                                    |  |
| <b>18. SECURITY</b>  |  |
| Security of ports / International Ship and Port Facility Security (ISPS) compliance            |  |
| Custom and Immigration Regulations in force  |  |
| <b>19. SMALL CRAFT FACILITIES</b>  |  |
| Information and facilities for small craft, yachts visiting the port                           |  |
| Yacht clubs, berths etc  |  |
| <b>20. SHORT LEAVE</b>   |  |
| <b>21. CLUBS RECREATION</b>  |  |
| Information Kiosk (Location)   |  |
| Foreign Exchange firms / Banks (Within / Near Port Area)                                       |  |
| Places of interest near port   |  |
| <b>22. VIEWS</b>   |  |
| Photographs(Duly annotated) of the approaches, leading marks, the entrance to the harbour etc. |  |
| <b>23. ADDITIONAL DETAILS</b>  |  |
| Any other information considered to be useful for the mariners                                 |  |
| <b>SIGNATURE OF THE OBSERVER / REPORTER / MASTER</b>   |  |

To accompany Indian Notices to  
Mariners No. 123/2024



Block correction for chart No. 2100

To accompany Indian Notices to  
Mariners No. 123/2024



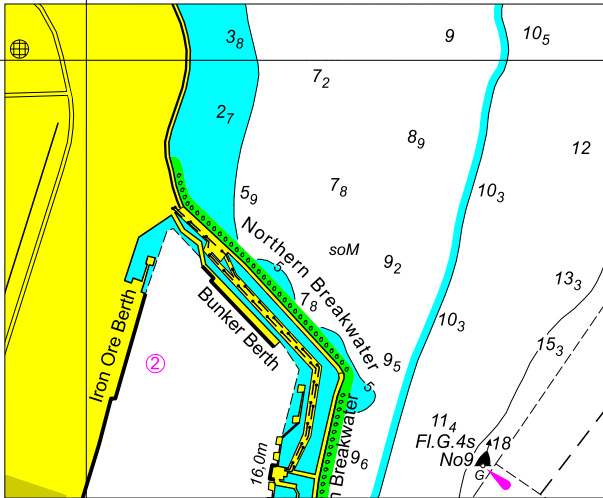
Block correction for  
chart No. 2100 (PLAN)

71°31'

20°  
55'

To accompany Indian Notices to Mariners No. 124/2024

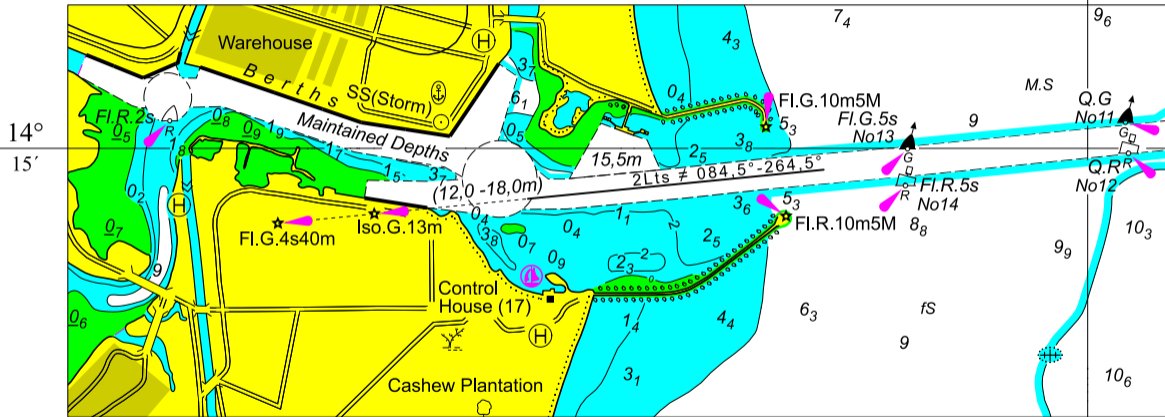
13°  
07'



80° 18'E

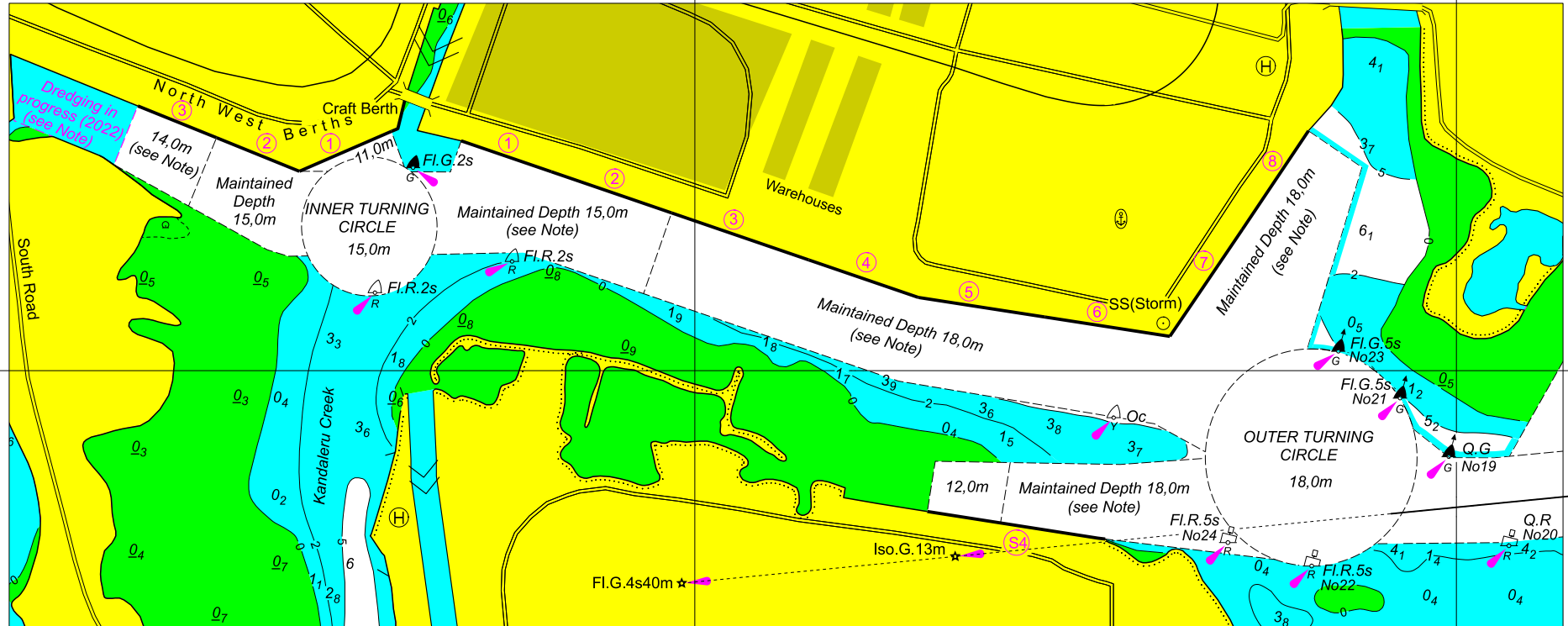
Block correction for Chart No. 3004

To accompany Indian Notices to Mariners No. 125/2024

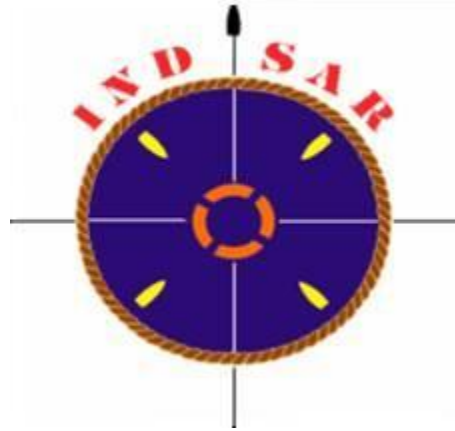


Block correction for Chart No. 3034

80°10'E







**FOR 24 X 7 SAR ASSISTANCE IN INDIAN SRR**

**Email: [mrcc-west@indiancoastguard.nic.in](mailto:mrcc-west@indiancoastguard.nic.in)**

**NATION WIDE SAR TELE: 1554 (LAND LINE)**

**INMARSAT C (IOR) 441907210 CODE: 43 (TOLL FREE)**

**AFTN: VABBYXYC**